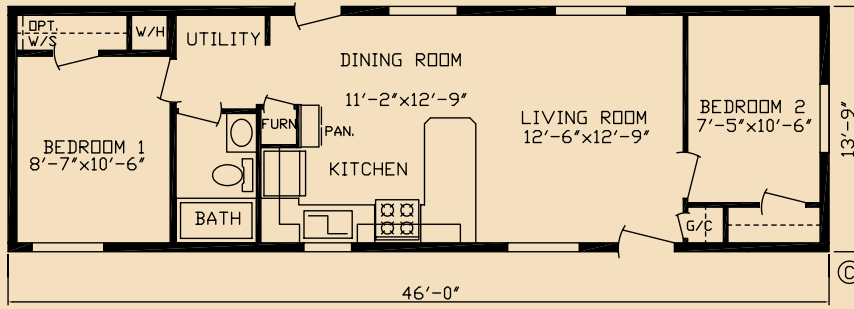




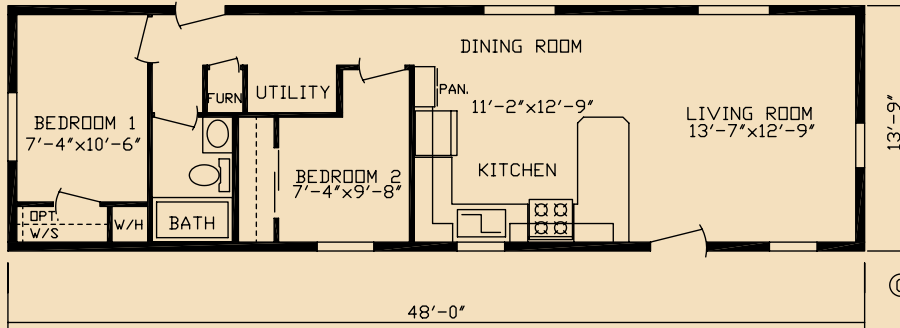
**Luxury Has Never Been More Affordable**



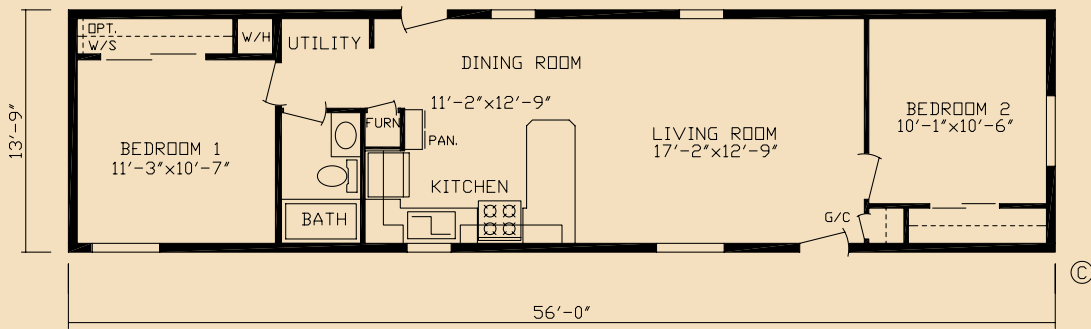
# Encore Single Section



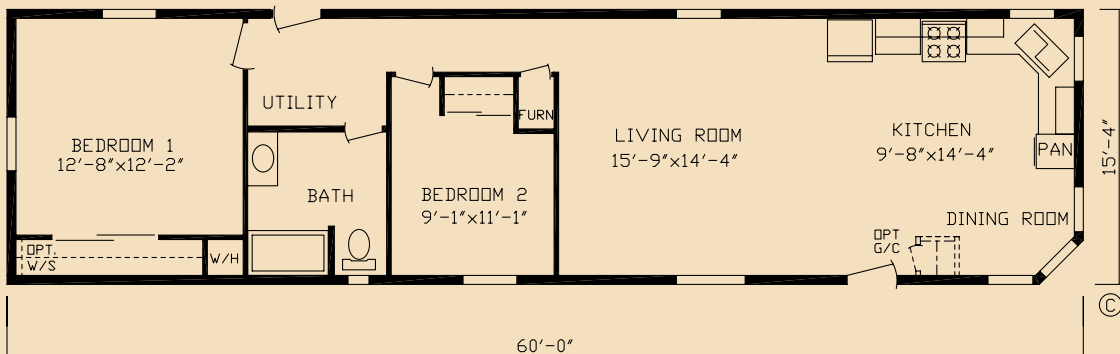
**Model No. 60115 (5014-2B-1BA) Sq. Ft. 633**



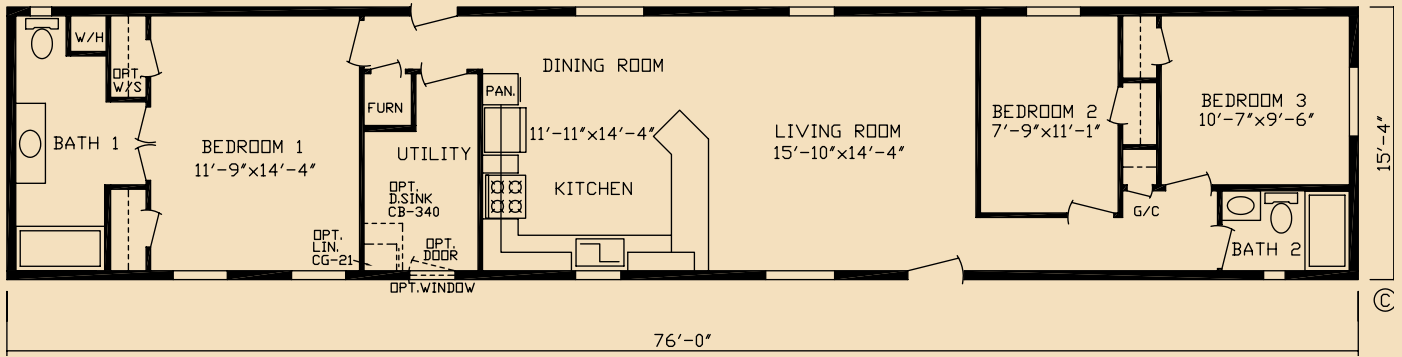
**Model No. 60114 (5214-2B-1BA) Sq. Ft. 660**



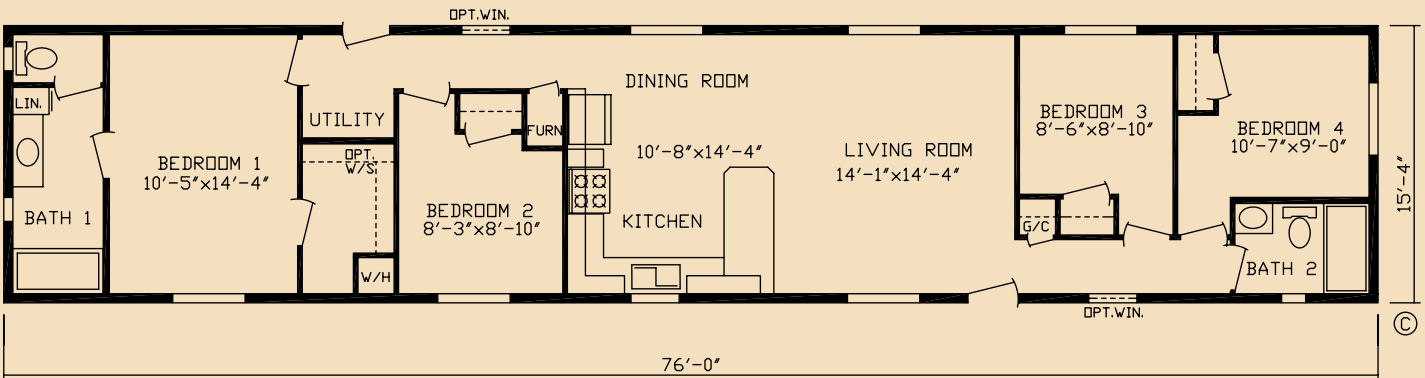
**Model No. 60104 (6014-2B-1BA) Sq. Ft. 770**



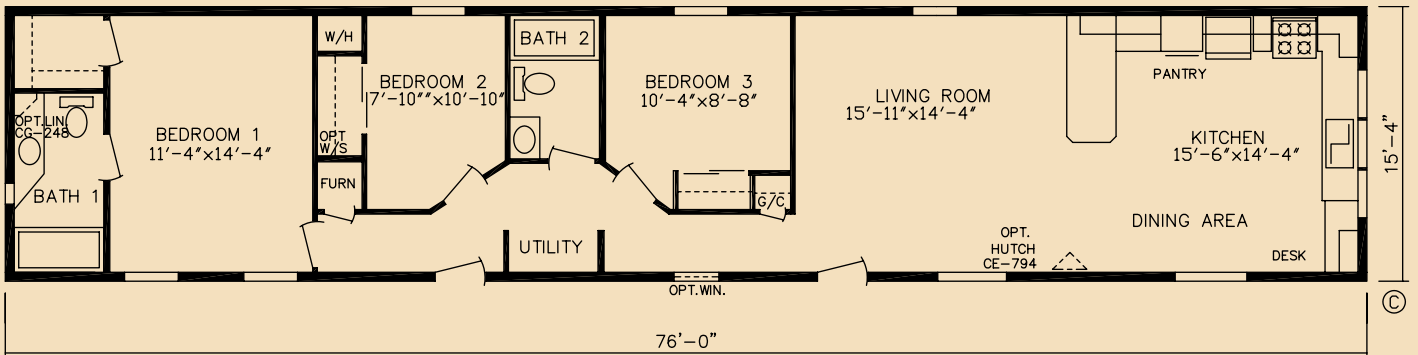
**Model No. 60057 (6416-2B-1BA) Sq. Ft. 920**



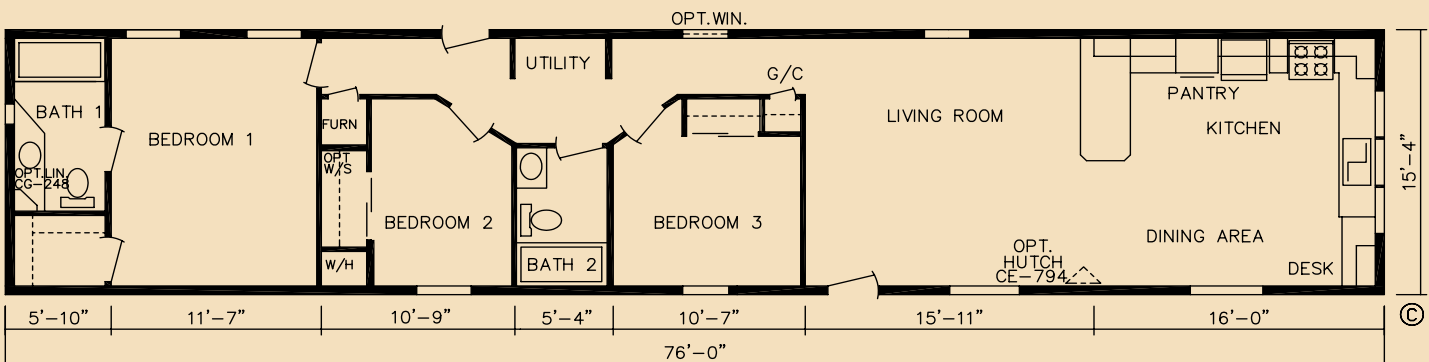
**Model No. 60003 (8016-3B-2BA) Sq. Ft. 1165**



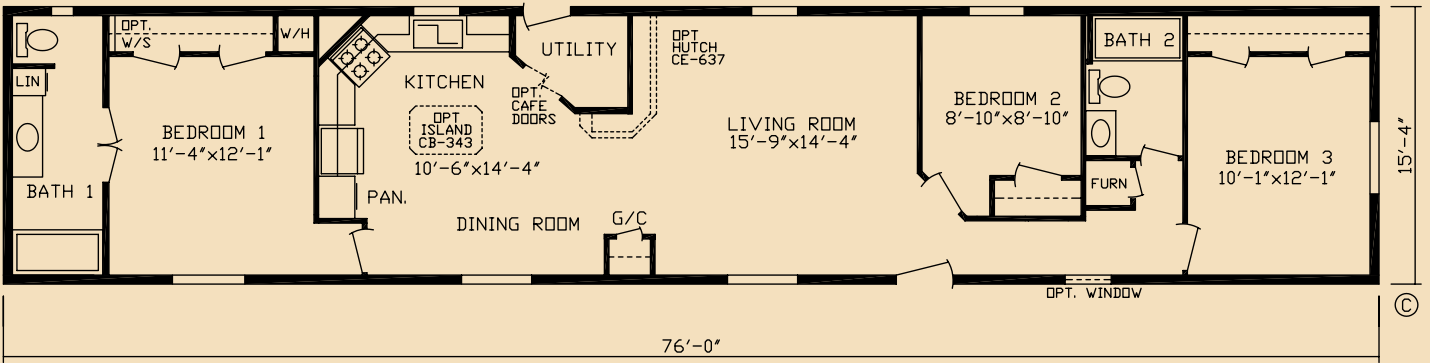
**Model No. 60020 (8016-4B-2BA) Sq. Ft. 1165**



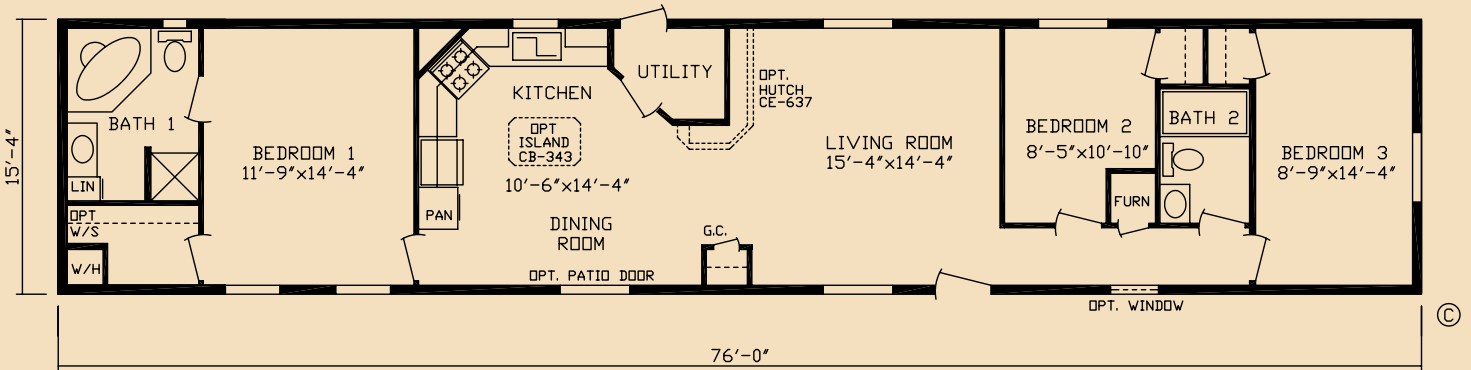
**Model No. 60029 (8016-3B-2BA) Sq. Ft. 1165**



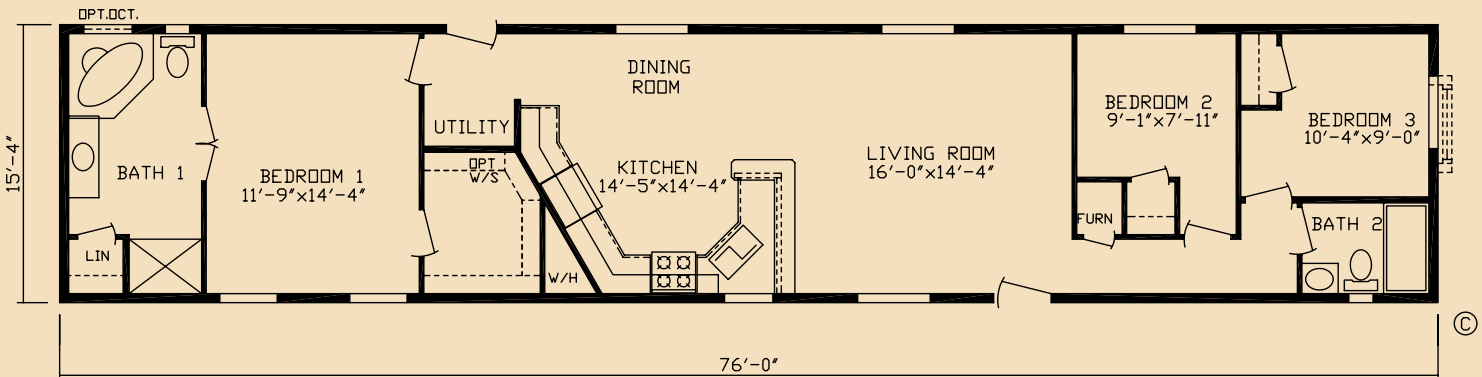
**Model No. 60029L (8016-3B-2BA) Sq. Ft. 1165**



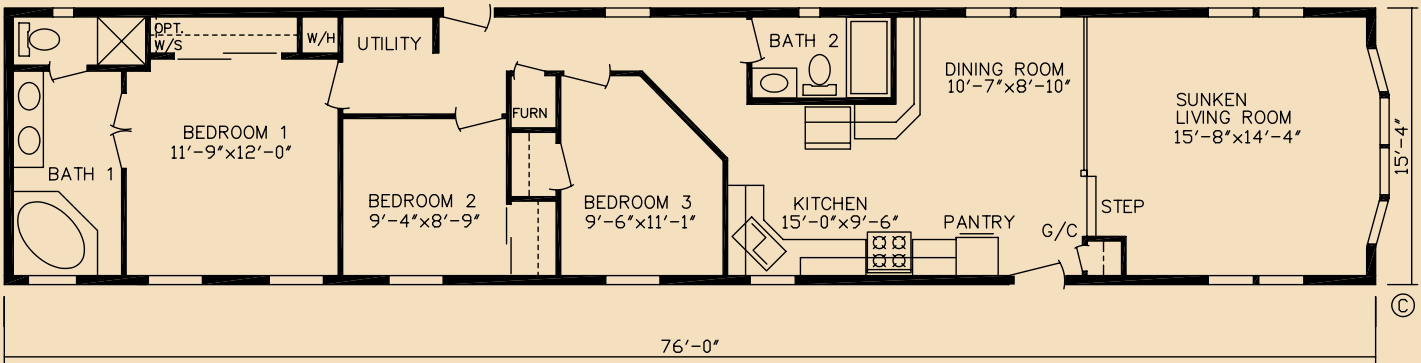
**Model No. 60032 (8016-3B-2BA) Sq. Ft. 1165**



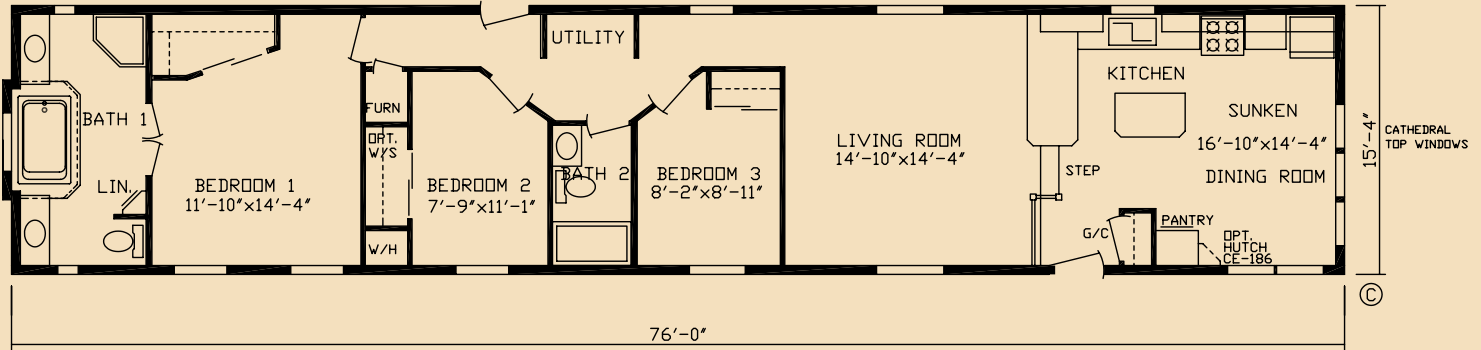
**Model No. 60034 (8016-3B-2BA) Sq. Ft. 1165**



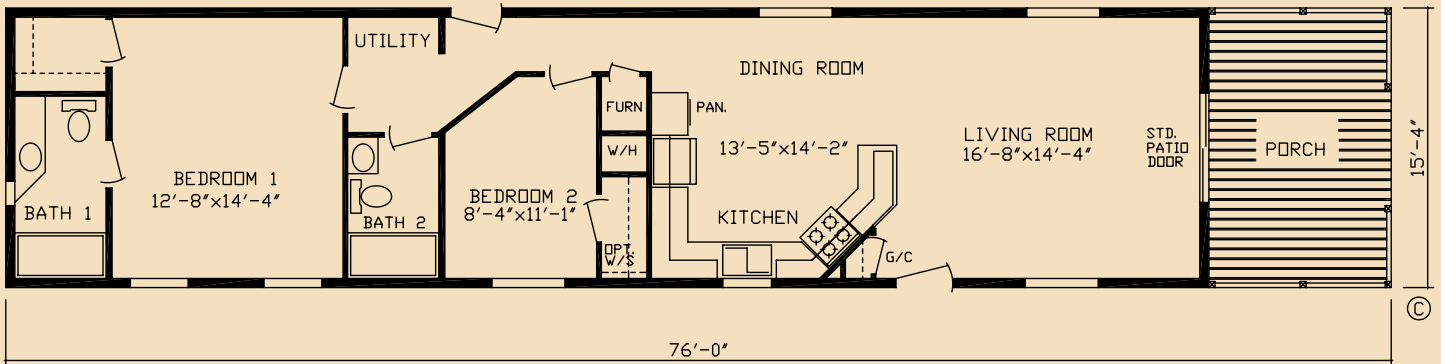
**Model No. 60039 (8016-3B-2BA) Sq. Ft. 1165**



**Model No. 60051 (8016-3B-2BA) Sq. Ft. 1165**



**Model No. 60052 (8016-3B-2BA) Sq. Ft. 1165**



**Model No. 60119 (8016-2B-2BA-PORCH) Sq. Ft. 1165**



# STANDARDS

## GENERAL

8' SIDEWALLS W/FLAT CEILING  
PERIMETER HEATING SYSTEM  
24" O.C. RAFTERS  
BRUSHED NICKEL PACKAGE  
BRUSHED NICKEL INTERIOR LIGHT FIXTURES  
BRUSHED NICKEL CEILING FAN (IF ORDERED)  
BRUSHED NICKEL CABINET PULLS & HINGES  
BRUSHED NICKEL DOOR KNOBS & HINGES  
OPTIMA FRAMED MIRRORS

## FURNACE

GAS FURNACE W/ELEC. IGNITION  
POSITIVE OPERATING SYSTEM  
INSULATED HEAT DUCT  
FURNACE ROOF JACK EXTENSION

## CARPET

STANDARD FOYER  
MANTRA CARPET W/TACK STRIP  
5 LB. CARPET PAD  
DIAMOND FLOOR ROLL GOODS

## ELECTRICAL

100 AMP SERVICE  
CEILING LIGHTS IN BEDROOMS  
GLASS GLOBES & SHADES  
WIRE & VENT FOR DRYER  
EXTERIOR RECEPT ON SIDEWALL  
LIGHT AT FRONT & REAR DOOR  
METRO DINETTE LIGHT  
CEILING LIGHT WITH SWITCH IN WALK-IN  
CLOSETS (PER PRINT)  
SMOKE ALARMS

## PLUMBING

PLUMB FOR WASHER  
WATER INLET SHUT-OFF VALVE  
30 GAL. DUAL ELEMENT ELEC. WATER HEATER  
DEEP STAINLESS STEEL KITCHEN SINK  
WATER SHUT-OFF VALVES THRU-OUT

## BATH

BATH EXHAUST FANS  
36" HIGH BATH LAVS  
TUB SURROUNDS  
PORCELAIN BATH LAVS

## CABINETRY

RIDGEMONT OAK HARDWOOD SHAKER CABINET  
DOORS  
SEAMLESS COUNTERTOPS  
SHELF IN WASHER/DRYER AREA  
CENTER SHELF IN KITCHEN BASE CABINETS  
ROLLER GUIDE DRAWER SYSTEM  
427 COVE MOULDING ON KITCHEN CABINETS

## DÉCOR

STIPPLED CEILING  
VENETIAN BLINDS THRU-OUT  
DECORATOR VINYL OVER GYPSUM  
COVENTRY DRAPE PACKAGE

## EXTERIOR

VINYL SIDING WITH SHEATHING  
12" SHUTTERS ON FRONT & DS  
(WITH VINYL SIDING)  
METAL STARTER STRIP W/VINYL SIDING  
ENERGY SEAL WINDBREAKER  
SHINGLED ROOF  
OWENS CORNING 25# SHINGLES WITH  
25 YEAR WARRANTY

## DOORS

3 HINGES ON INTERIOR DOORS  
FULL DOOR-STOP MOULDING  
BRUSHED NICKEL DOOR KNOBS  
38X82 DECORATOR FRONT DOOR W/STORM  
34X82 9-LITE REAR DOOR W/STORM  
DEADBOLT LOCK AT EXTERIOR DOORS  
METAL FURNACE DOOR

## WINDOWS

KINRO 60" VINYL WINDOWS  
\*\*\*\* OPTIONAL PELLA WINDOWS

## APPLIANCES

18 CF 2-DOOR REFRIGERATOR  
30" GAS RANGE W/ELECTRONIC IGNITION  
POWER VENT RANGE HOOD

Pictures Show Various Features That May Be Optional  
Some Images In This Brochure Show Porches and Garages that Are Built By Others  
© Copyright 2015 Friendship Homes, Montevideo, MN

Note: For model dimensions, our standards and standards of the industry generally include a nominal 4-foot allowance for hitch length plus allowance for other appurtenances for width and for length normally included in measurements for highway movement. Rear bedroom dimensions include bay, unless bay is optional on a particular unit or is omitted by special order. Room sizes are nominal and sometimes the dimension includes wall thickness. Designs, specifications and prices are subject to change without notice. Some optional items are shown. Some tires, wheels, brakes and axles are reused after careful inspection. WP5



815 Budd Road, Montevideo MN 56265  
www.friendshiphomesmn.com

8/2015