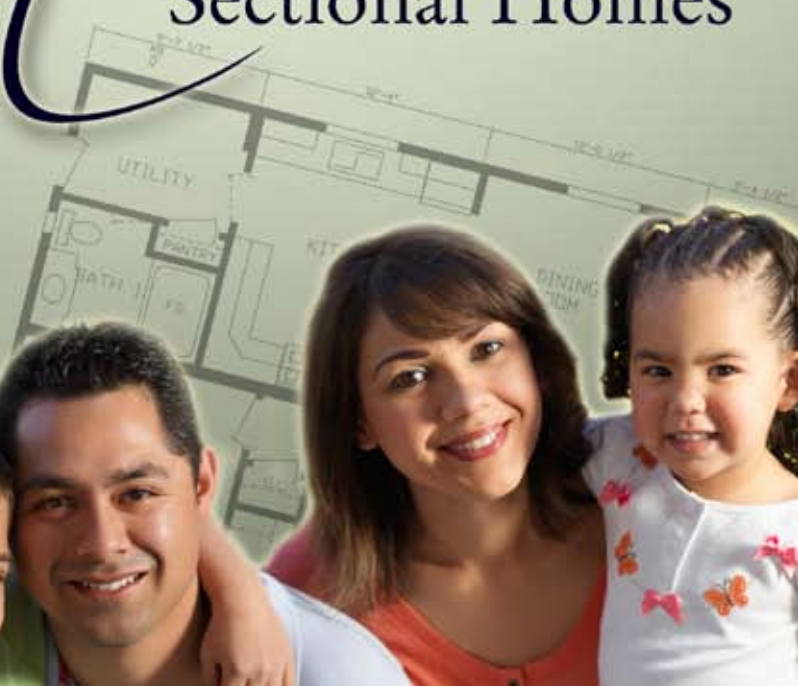
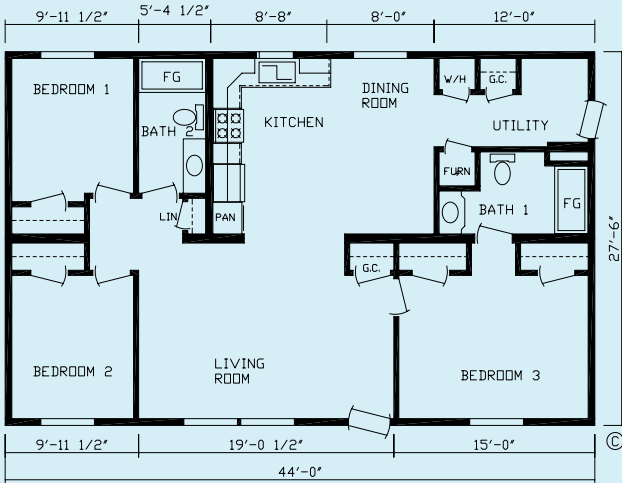




Marguis

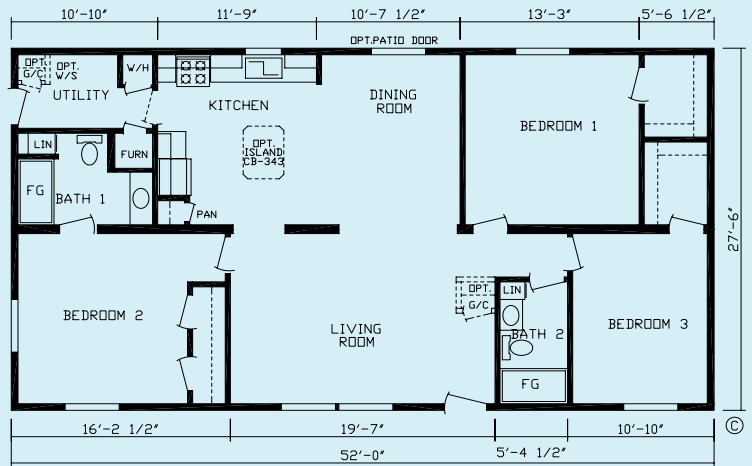
Canadian A277
Sectional Homes





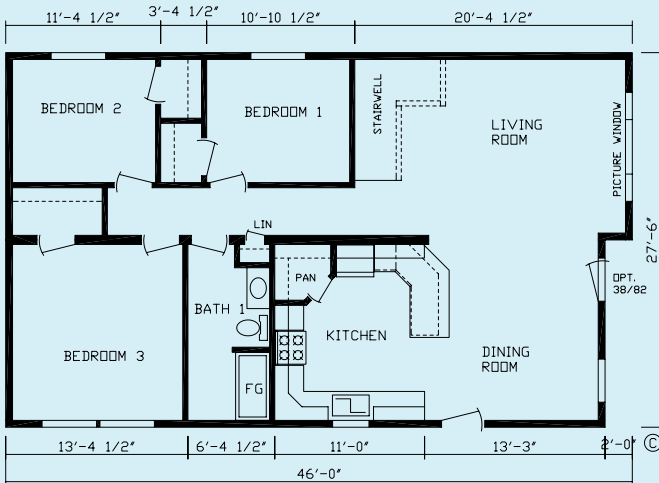
142028KZ

Order No. 142028 • Model No. 4428 • Sq. Ft. 1210



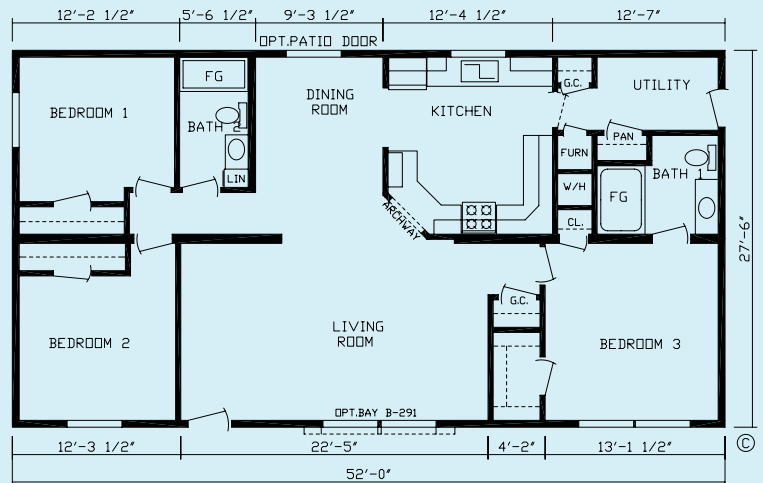
142021KZ

Order No. 142021 • Model No. 5228 • Sq. Ft. 1430



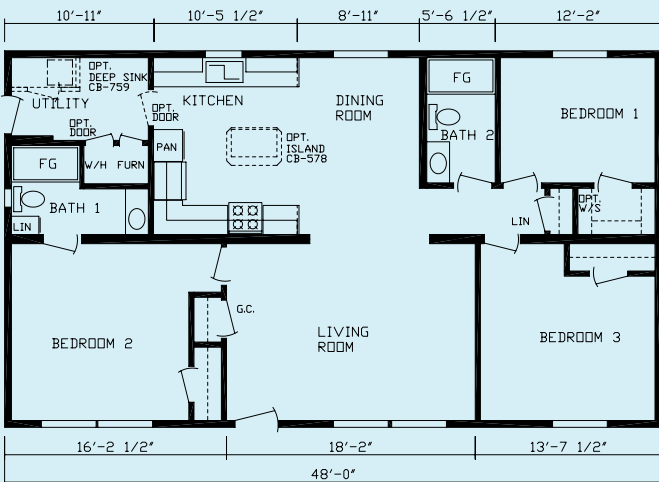
142029

Order No. 142029 • Model No. 4628 • Sq. Ft. 1237



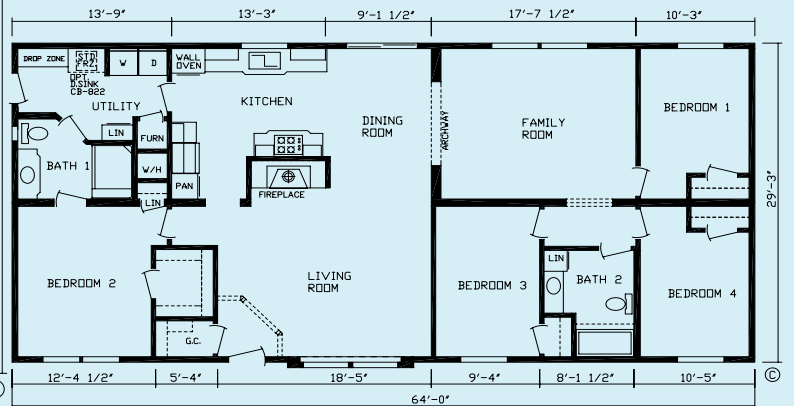
142023KZ

Order No. 142023 • Model No. 5228 • Sq. Ft. 1430



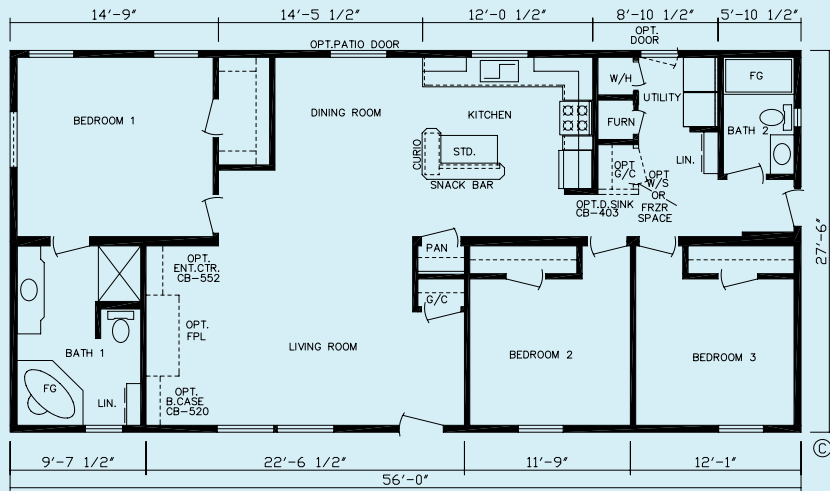
142022KZ

Order No. 142022 • Model No. 4828 • Sq. Ft. 1320



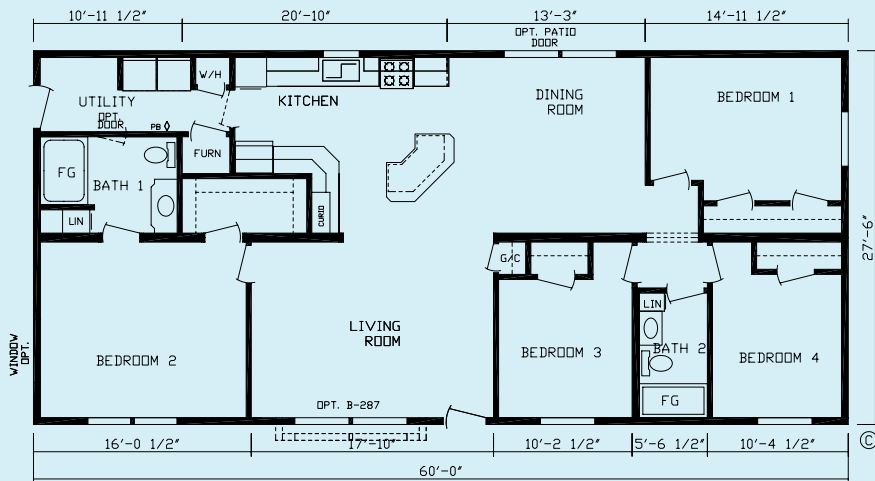
142047KZ

Order No. 142047 • Model No. 6428 • Sq. Ft. 1872



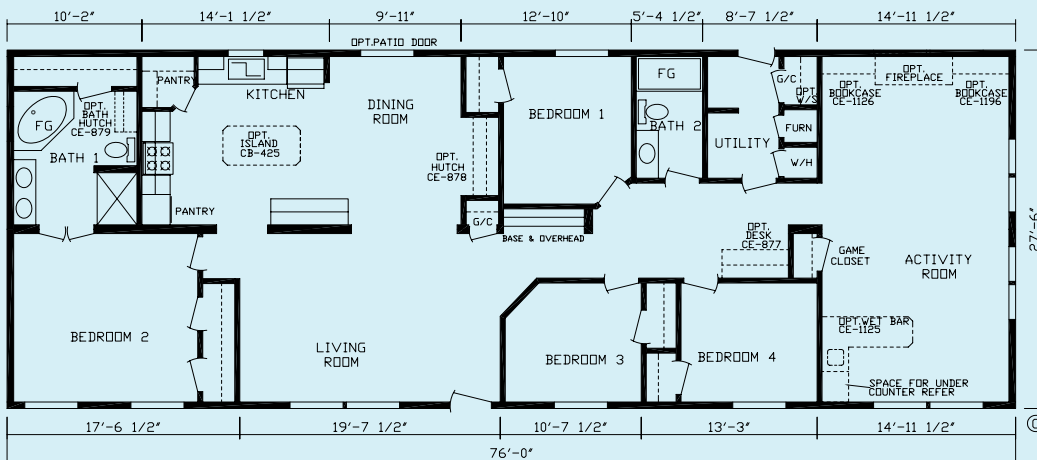
142018KZ

Order No. 142018 • Model No. 5628 • Sq. Ft. 1540



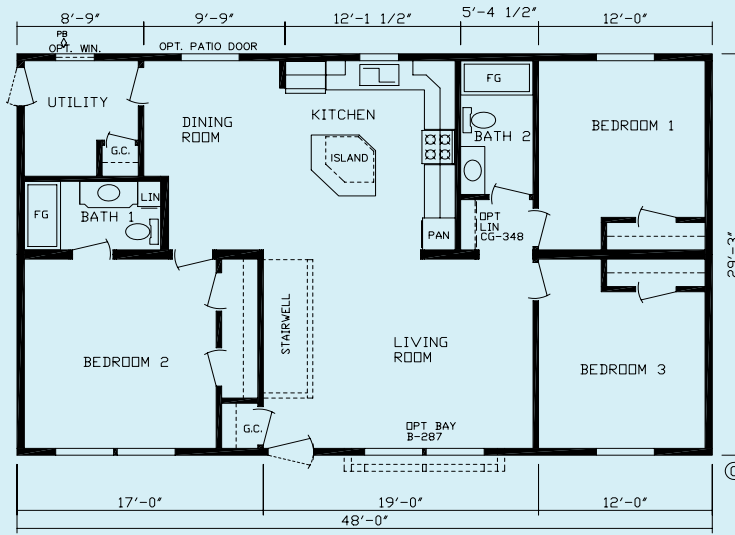
142027KZ

Order No. 142027 • Model No. 6028 • Sq. Ft. 1650



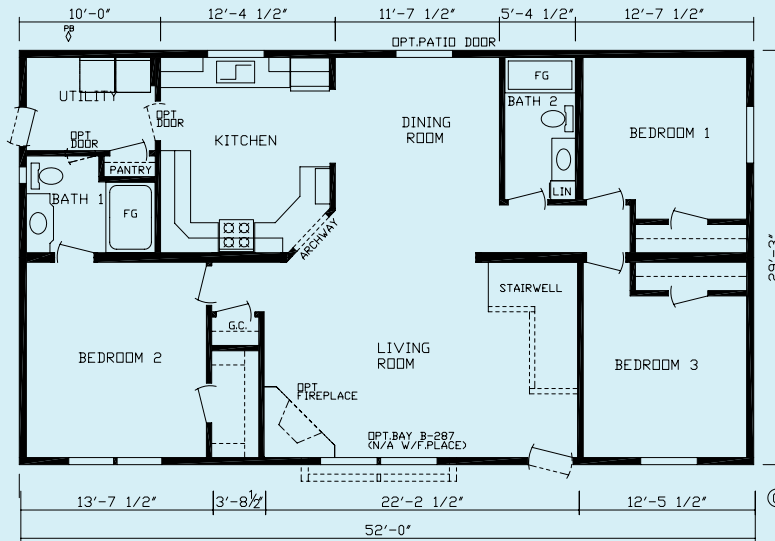
142032KZ

Order No. 142032 • Model No. 6828 • Sq. Ft. 2090



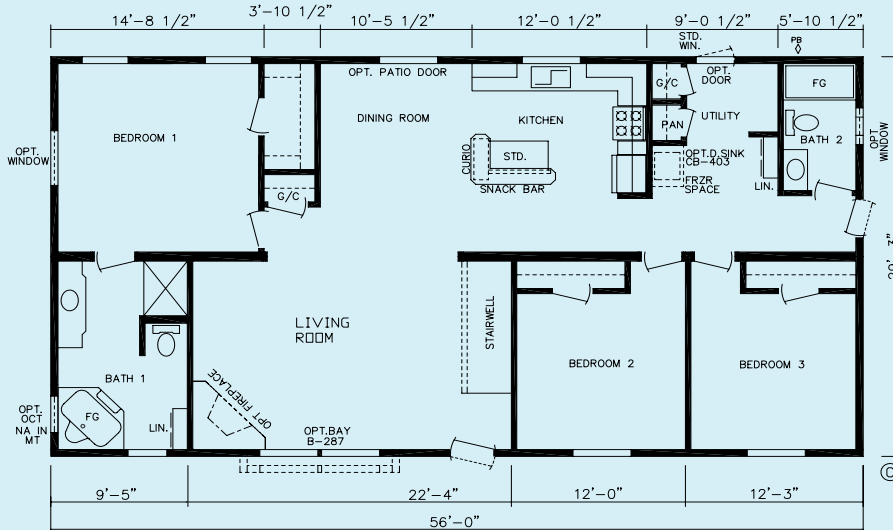
142006

Order No. 142006 • Model No. 4832 • Sq. Ft. 1404



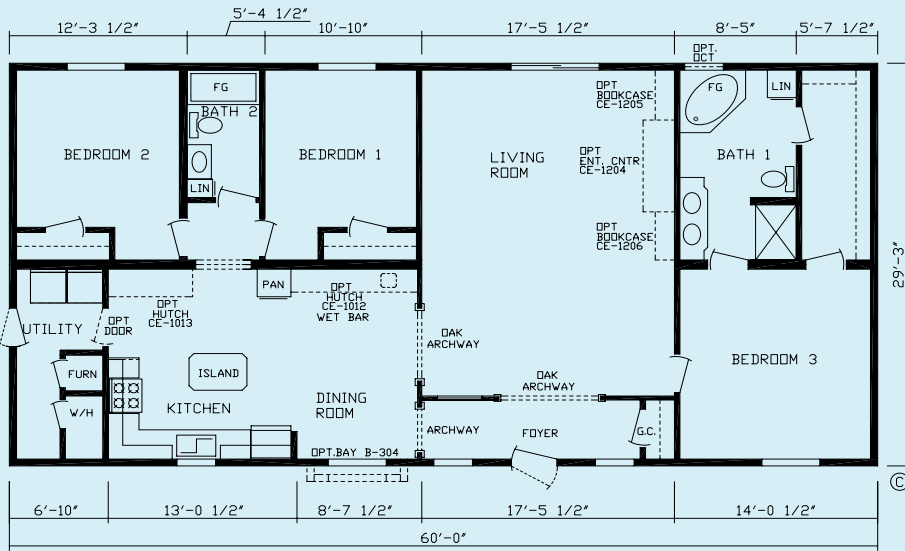
142001

Order No. 142001 • Model No. 5232 • Sq. Ft. 1521



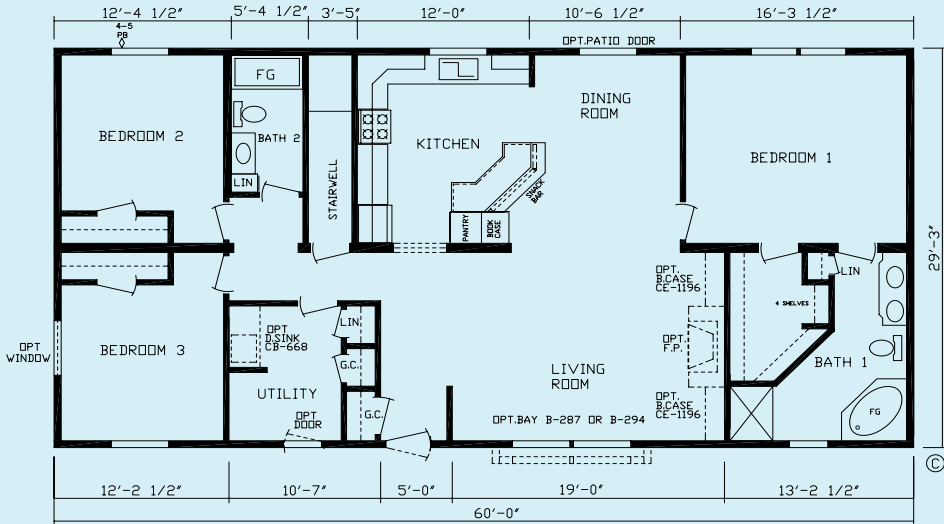
142004

Order No. 142004 • Model No. 5632 • Sq. Ft. 1638



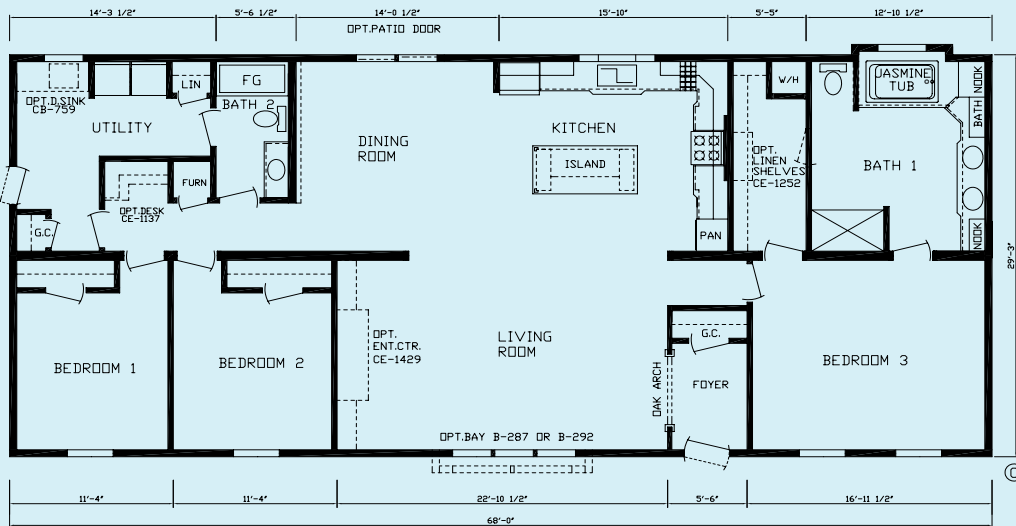
142012KZ

Order No. 142012 • Model No. 6032 • Sq. Ft. 1755



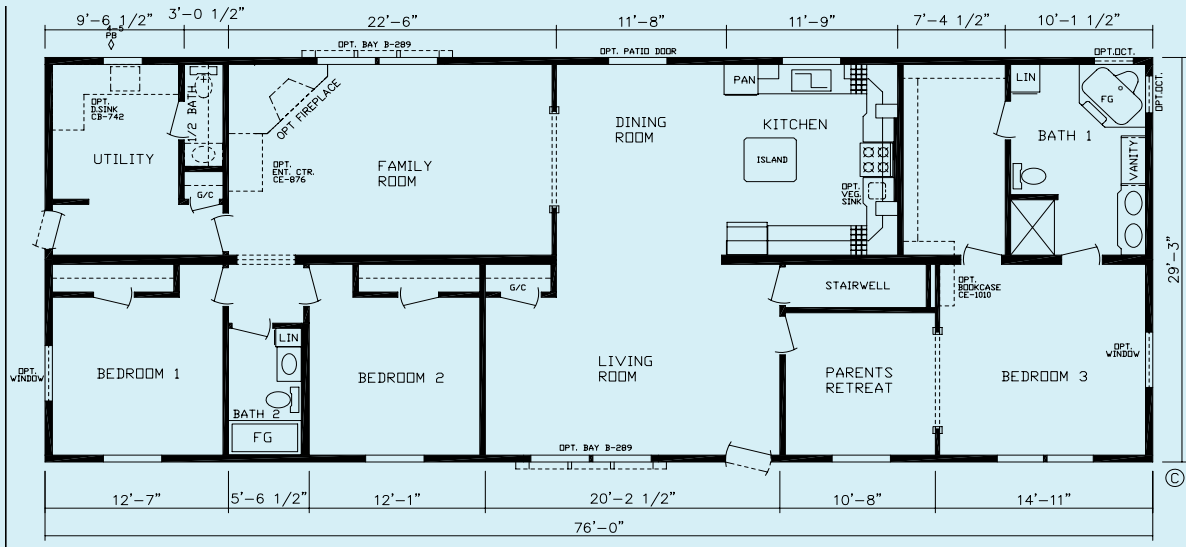
142002

Order No. 142002 • Model No. 6032 • Sq. Ft. 1755

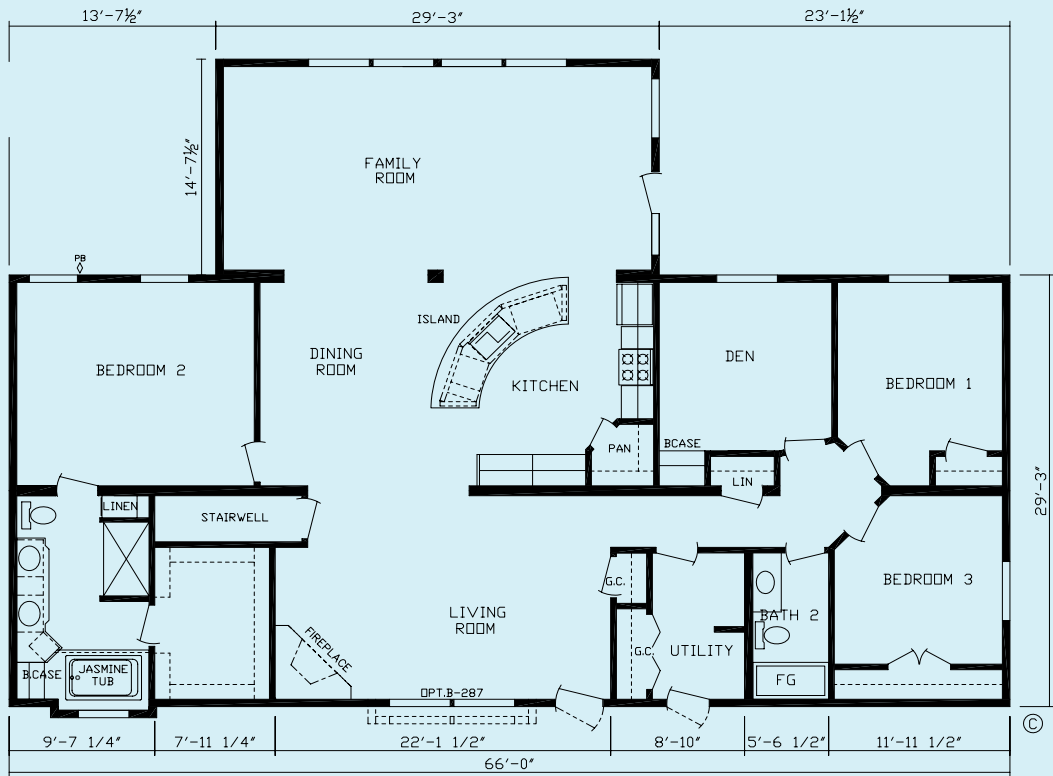


142009KZ

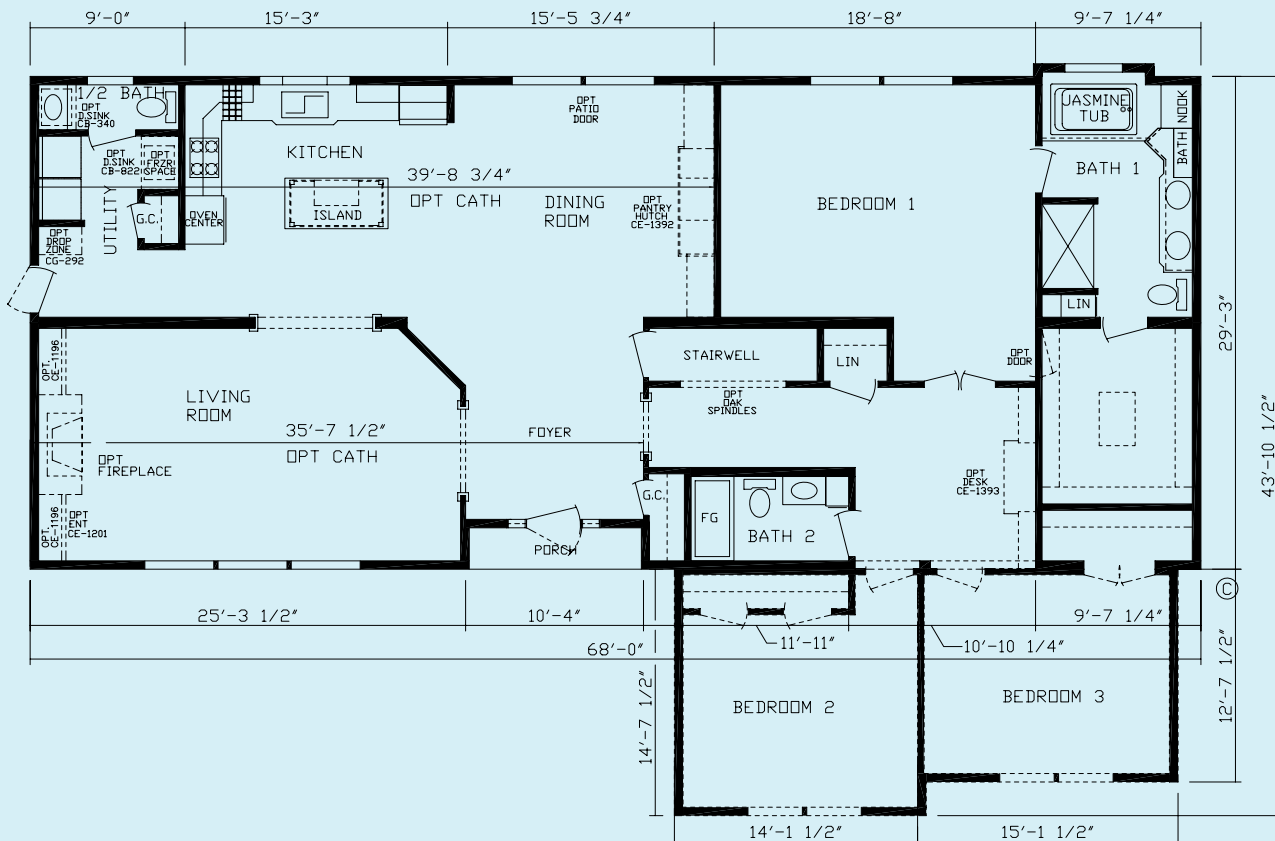
Order No. 142009 • Model No. 6832 • Sq. Ft. 1989



142003
Order No. 142003 • Model No. 7632 • Sq. Ft. 2223



142037
Order No. 142037 • Model No. 6644 • Sq. Ft. 2358



142005

Order No. 142005 • Model No. 6844 • Sq. Ft. 2388

Canadian A277 Sectional Homes

Standard Specifications

GENERAL

TRUSS JOIST FLOOR SYSTEM
SITE READY (KZ) MODELS 2x10 FLOOR JOISTS
¾" FLOOR DECKING
DOUBLE RIM JOIST
8' SIDEWALL HEIGHT
FLAT CEILINGS
2x4 INTERIOR WALLS
2X4 MARRIAGE WALLS
ENERGY TRUSS RAFTERS- 24" O.C.
60 LB SNOW LOAD
5/12 ROOF PITCH STANDARD
NON RETURNABLE CARRIER
SET OF (2) PINTEL HITCHES
6 MIL VAPOR BARRIER AT ALL EXTERIOR WALLS AND CEILING

FLOOR COVERING

VINYL FOYER
LEGACY CONGOLEUM NO-WAX VINYL FLOOR COVERINGS
PLUSH 25 OZ NEW DAY CARPET
TACK STRIP THRU-OUT
7 LB CARPET PAD THRU-OUT

HEATING

BASEMENT MODELS -
RETURN AIR GRILLS & REGISTERS INSTALLED
SITE READY (KZ) MODELS -
ELECTRIC FURNACE
(HIGH EFFICIENCY GAS FURNACE OPTIONAL)
POSITIVE OPERATING SYSTEM
INSULATED HEAT DUCT WORK
WHOLE HOUSE VENTILATION SYSTEM

ELECTRICAL

GFI PROTECTED RECEPES IN BATHS & KITCHEN
(2) EXTERIOR RECEPES
CEILING LIGHTS IN ALL BEDROOMS
WIRE & VENT FOR DRYER
200 AMP BREAKER BOX FOR BASEMENT (100 AMP OPTIONAL)
GLASS GLOBES & SHADES
LIGHT OVER KITCHEN SINK
ROCKER STYLE LIGHT SWITCHES
CEILING LIGHT W/ SWITCH IN WALK-IN CLOSETS
3-WAY SWITCH IN UTILITY ROOM (MOST MODELS)
3-WAY SWITCH IN STAIRWELL
ARC FAULT PROTECTION IN BEDROOMS
BRACE FOR FAN IN ALL BEDROOMS
SMOKE ALARMS W/CO DETECTOR
UPGRADE COACH LIGHT AT FRONT DOOR
UPGRADE COACH LIGHT A REAR DOOR
BRUSHED NICKEL DINING RM CHANDELIER

PLUMBING

BASEMENT MODELS -
WATER & DRAIN LINES STUBBED THROUGH FLOOR
SITE READY (KZ) MODELS -
WATER & DRAIN LINES COMPLETE
PLUMB FOR WASHER
MOEN FAUCETS THRU-OUT
CHROME SINGLE LEVER FAUCET IN KIT WITH SPRAYER
ANTI-SCALD TUB/SHOWER FAUCETS
WHITE ACRYLIC KITCHEN SINK (STAINLESS STEEL OPTIONAL)
SOLID CORE DRAIN LINES
WATER SHUT OFF VALVES THRU-OUT(EXCL.TUBS)
WATER INLET SHUT OFF VALVE
(1) FROST FREE EXTERIOR FAUCET DOOR SIDE
SITE READY (KZ) MODELS -
40 GAL. ELECTRIC HOT WATER HEATER

BATHS

EXHAUST FAN #2 BATH
EXHAUST FAN W/ LIGHT #1 BATH
PORCELAIN BATH LAVS W/ POP-UP & OVERFLOW
OVERFLOW TUB DRAINS
"BUMP OUT" COUNTERS-MSTR BATHS
CHROME TOWEL BAR & PAPER HOLDERS IN BATHS
FIBERGLASS TUBS – BOTH BATHS
DELUXE MIRROR -BATHS
DRAWER BANK IN MOST MASTER BATH LAVS

INSULATION

2X6 SIDEWALLS-16" O.C. W/ R-24
R-44 BLOWN CEILING INSULATION

CABINETY

RIDGEMONT OAK STAINED HARDWOOD CABINET DOORS
DOVETAIL CONSTRUCTED WOOD DRAWERS
HARDWOOD STILES W/CONCEALED HINGES
DRAWERS ABOVE BASE CABINETS IN KITCHEN
30" OVERHEAD CABINETS
LAZY SUSAN IN KITCHEN BASE CAB. (PER PRINT)
CENTER SHELF IN KIT BASE CABINETS
STEEL ROLLER GUIDE DRAWER SYSTEM
WIDE CROWN MOLDING ON O'HEAD CAB.
BRUSHED NICKEL CABINET HARDWARE
LAMINATE COUNTERTOP BACKSPLASH IN KITCHEN & BATHS
LAMINATE BEVELED EDGE COUNTERTOP IN KITCHEN & BATHS
SHELF IN WASHER/DRYER AREA
GUEST CLOSET

EXTERIOR

ENERGY SEAL WINDBREAKER
7/16" WOOD SHEATHING SIDEWALLS & ENDWALLS
RIDGE & EAVE VENTING
15" RESIDENTIAL SHUTTERS-FRONT & DOOR SIDE
VINYL LAP SIDING (DUTCH DOUBLE 4)
15" EAVES ON 32' WIDE SIDEWALLS
18" EAVES ON 28' WIDE SIDEWALLS
OWENS-CORNING 30 YEAR ARCHITECTURAL SHINGLES

DOORS

38X82 DECORATOR FRONT DOOR W/ STORM
34X82 9-LITE REAR DOOR W/STORM
BRUSHED NICKEL LEVER INT DOOR HANDLES
DEADBOLT LOCK FRONT & REAR DOOR
32X82 INTERIOR DOORS
TRIPLE MORTISE HINGES ON INTERIOR DOORS
HARDWOOD DOOR JAMS

DÉCOR

VENETIAN BLINDS THRU-OUT
LUXE DRAPE PACKAGE
VINYL ON GYPSUM WALLS (LAUAN SUBSTRAIGHT)
HARDWOOD TRIM T/O (BASE AND CASE)

WINDOWS

THERMOPANE "LOW E" VINYL WINDOWS
HARDWOOD SILLS

APPLIANCES

WHITE 30" DELUXE ELECTRIC RANGE
WHITE 18 C.F. 2 DOOR F.F. REFER W/ ICEMAKER
WHITE POWERSCRUB DISHWASHER
WHITE POWER VENT RANGE HOOD WITH LIGHT

