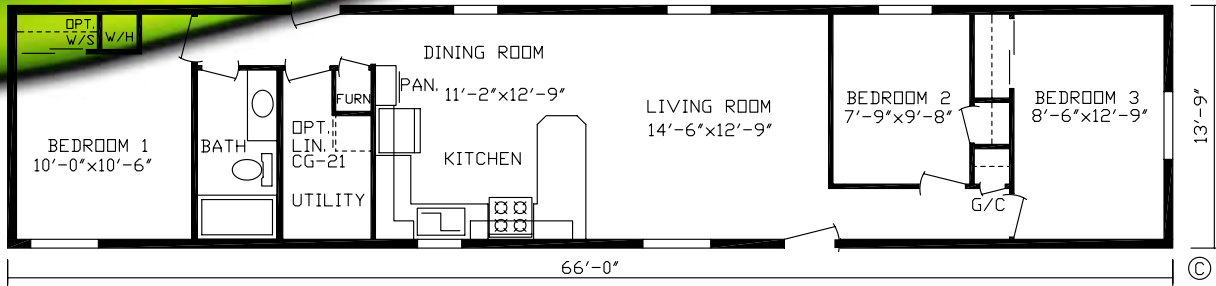
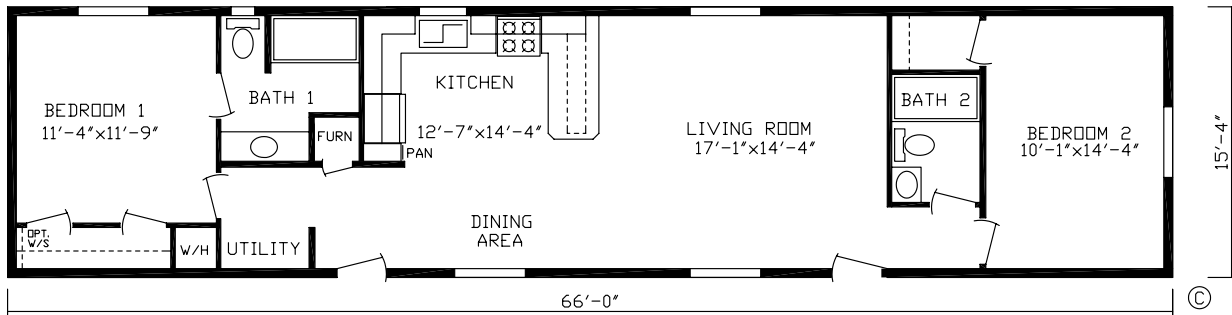


Northern Advantage Single Sections



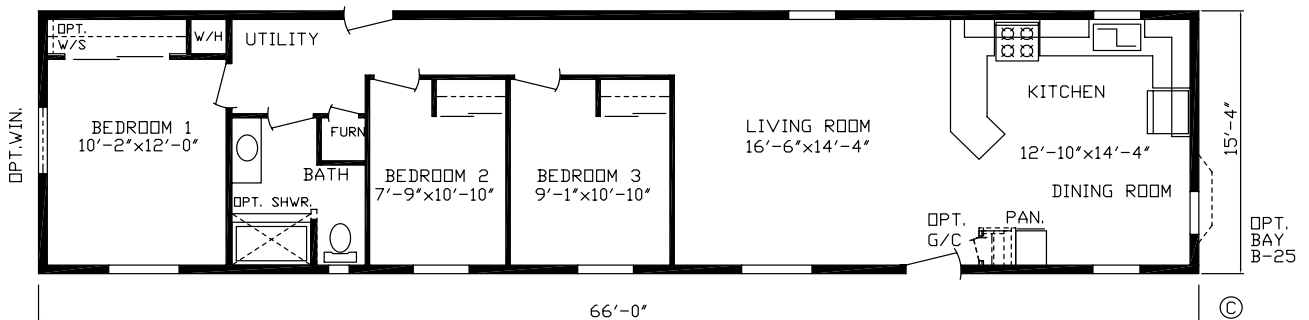
160504

Order No. 160504 • Model No. 7014 • Sq. Ft. 908



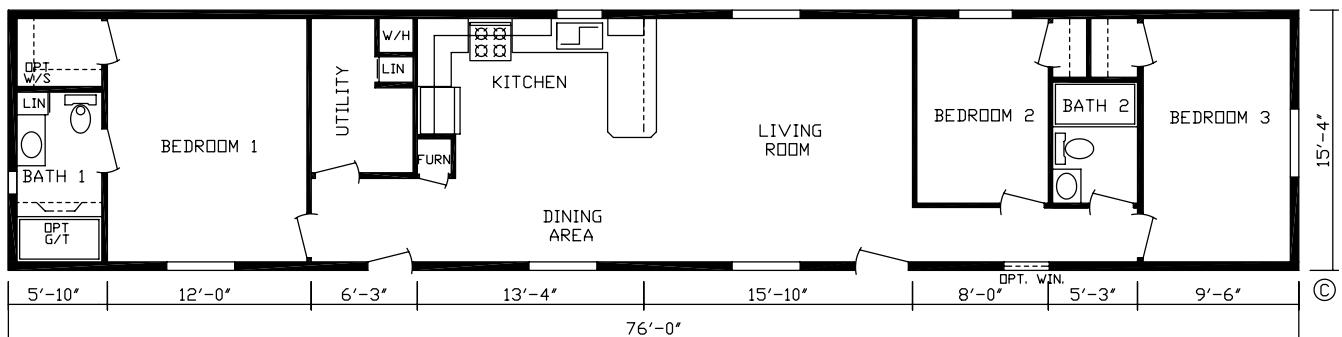
160503

Order No. 160503 • Model No. 7016 • Sq. Ft. 1012



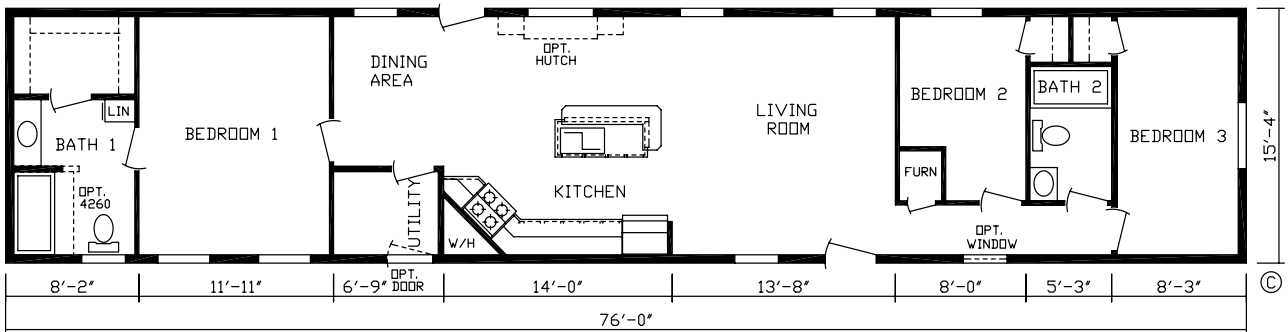
160502

Order No. 160502 • Model No. 7016 • Sq. Ft. 1012
Available as a 2-Bathroom (Order No. 160509)



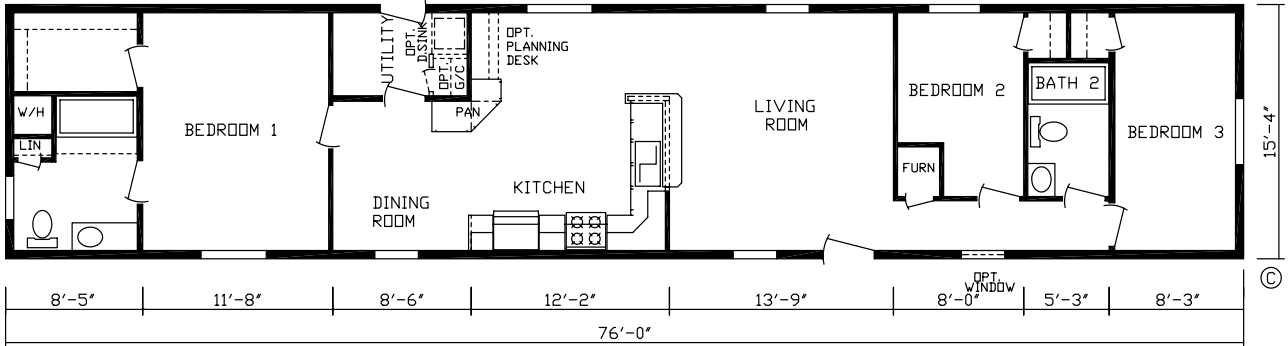
160508

Order No. 160508 • Model No. 8016 • Sq. Ft. 1165



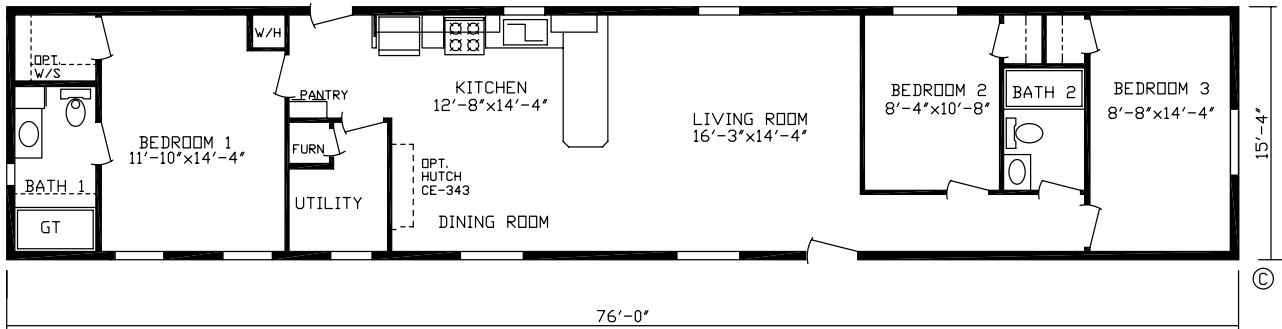
160526

Order No. 160526 • Model No. 8016 • Sq. Ft. 1165



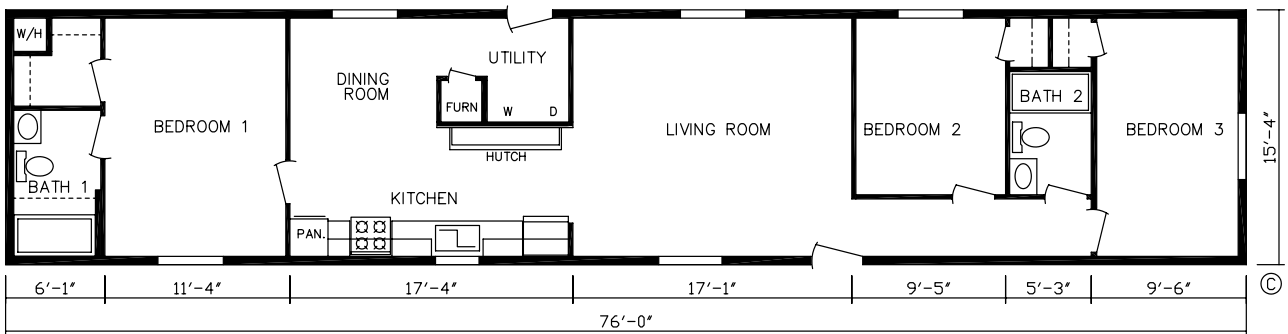
160525

Order No. 160525 • Model No. 8016 • Sq. Ft. 1165



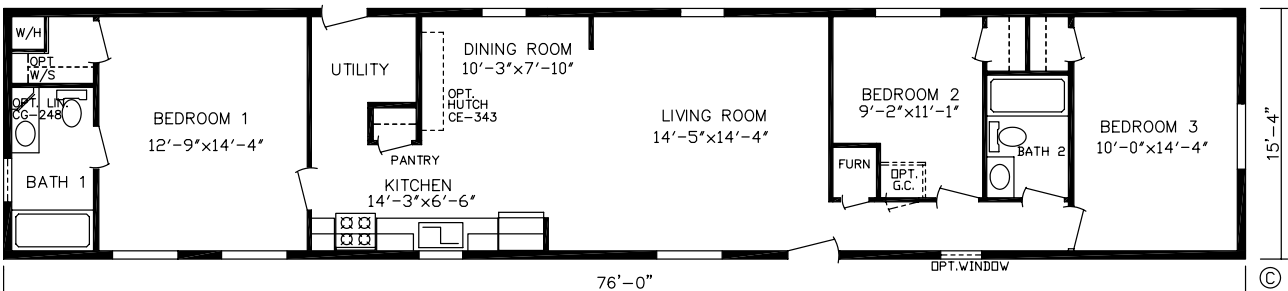
160523

Order No. 160523 • Model No. 8016 • Sq. Ft. 1165



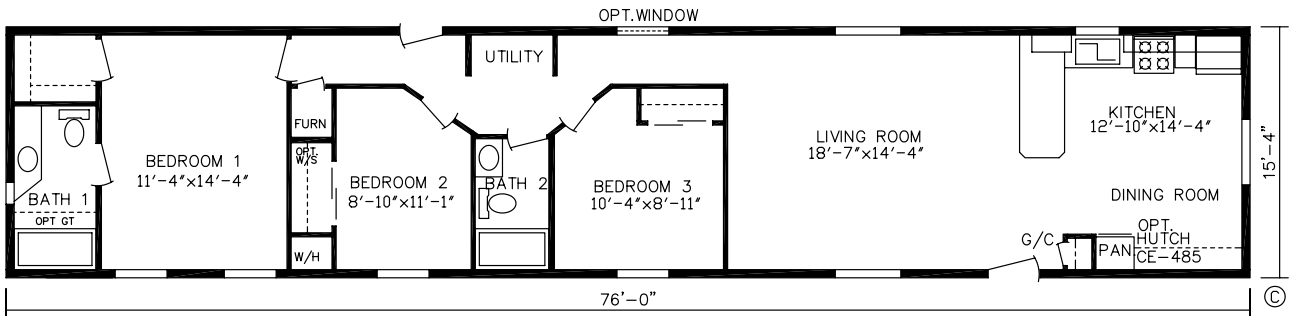
160506

Order No. 160506 • Model No. 8016 • Sq. Ft. 1165



160500

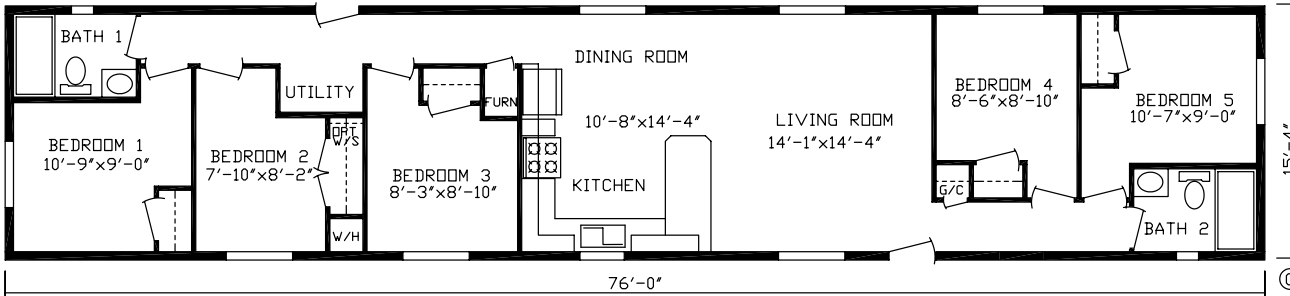
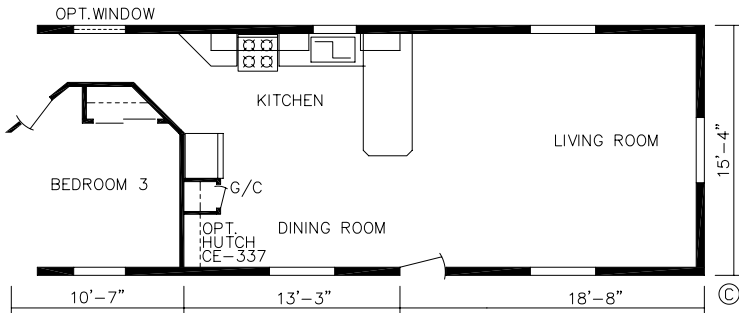
Order No. 160500 • Model No. 8016 • Sq. Ft. 1165



160501

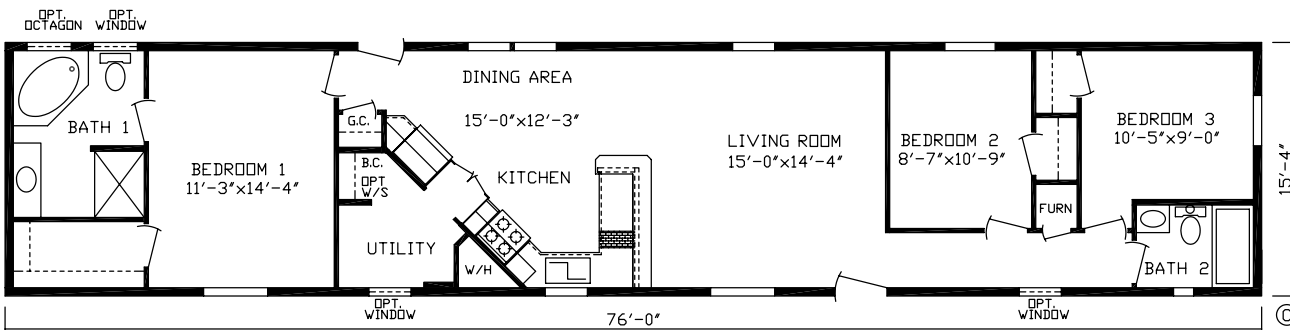
Order No. 160501 • Model No. 8016 • Sq. Ft. 1165

RO-5179



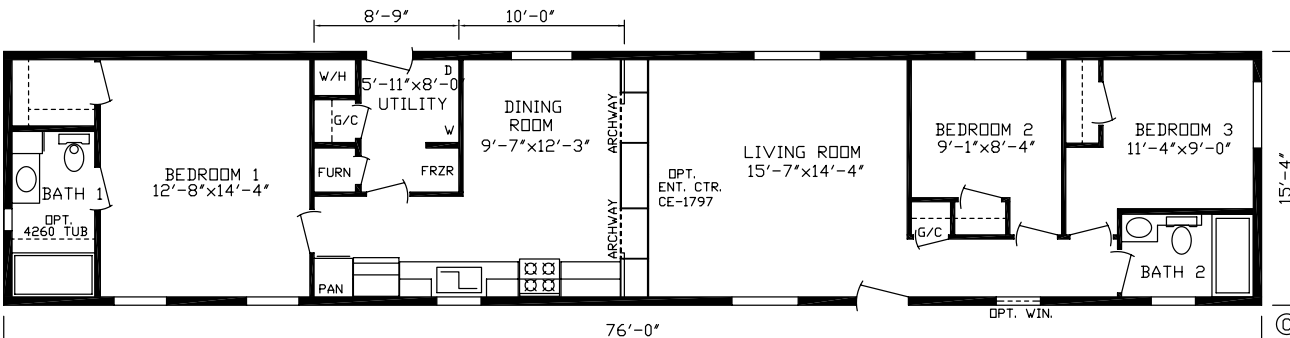
160510

Order No. 160510 • Model No. 8016 • Sq. Ft. 1165



160511

Order No. 160511 • Model No. 8016 • Sq. Ft. 1165



160522

Order No. 160522 • Model No. 8016 • Sq. Ft. 1165

Northern Advantage Standards

General:

8' Flat Sidewall Height
In-Floor Heating System
24" O.C. Rafters
2x8 Floor Joist (16' ONLY)
Tongue & Groove OSB Floor Decking

Furnace:

Gas Furnace w/Electric Ignition
Positive Operating System
Insulated Heat Ducts
Furnace Roof Jack Extension

Carpet:

Standout Carpet Throughout
5lb Carpet Pad
Roll Goods Where Applicable

Electric:

100 Amp Service
Ceiling Lights in all Bedrooms
Glass Globes & Shades
Wire & Vent For Dryer
Exterior Recept on Sidewall
Porch Light At Front & Rear Doors
Smoke Alarms

Plumbing:

Plumb for Washer
Water Inlet Shut-Off Valve
30 Gallon Dual Element
Electric Water Heater
Deep Stainless Steel Kitchen Sink

Baths:

Bath Exhaust Fans
36" High Bath Lavs
Tub Surrounds

Insulation:

R-11 Insulation in Floor
2 x 6 Sidewalls with R-19 Insulation
R-25 Insulation in Ceiling

Cabinetry:

Wrapped Cabinet Doors & Stiles
Self-Edge Countertop Edge
Seamless Countertops
Shelf Over Refrigerator
Center Shelf in Kitchen Base Cabinets
Roller Guide Drawer System

Décor:

Stippled Ceiling
Venetian Blinds Thru-Out
Valances Thru-Out
Decorator Vinyl Over Gypsum
Gallary Mainstreet Wrapped Trim

Exterior:

Vinyl Siding w/Sheathing
Metal Starter Strip w/Vinyl Siding
Energy Seal Windbreaker
Shingled Roof
Owens Corning Supreme Shingles with
25 Year Warranty

Doors:

3 Hinges on Interior Doors
Full Door Stop Molding
Brushed Nickel Door Knobs
34 x 82 9 Lite Rear Door
38 x 82 Decorator Front Door
Deadbolt Lock At Exterior Doors
Keyed Alike Locksets

Windows:

Kinro Low E Vinyl 60" Windows

Appliances:

18 CF 2-Door Refrigerator
30" Gas Range w/Electric Ignition
Power Vent Range Hood

Note: For model dimensions, our standards and standards of the industry generally include a nominal 4-foot allowance for hitch length plus allowance for other appurtenances for width and for length normally included in measurements for highway movement. Rear bedroom dimensions include bay, unless bay is optional on a particular unit or is omitted by special order. Room sizes are nominal and sometimes the dimension includes wall thickness. Designs, specifications and prices are subject to change without notice. Some optional items are shown. Some tires, wheels, brakes and axles are reused after careful inspection. WP5



815 Budd Road, Montevideo MN 56265
www.friendshiphomesmn.com

8/2015