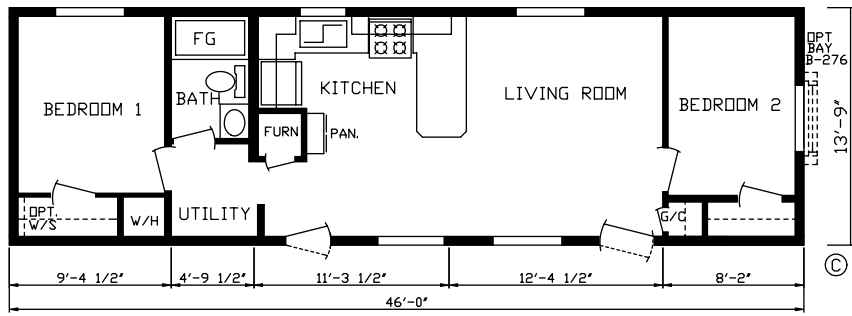




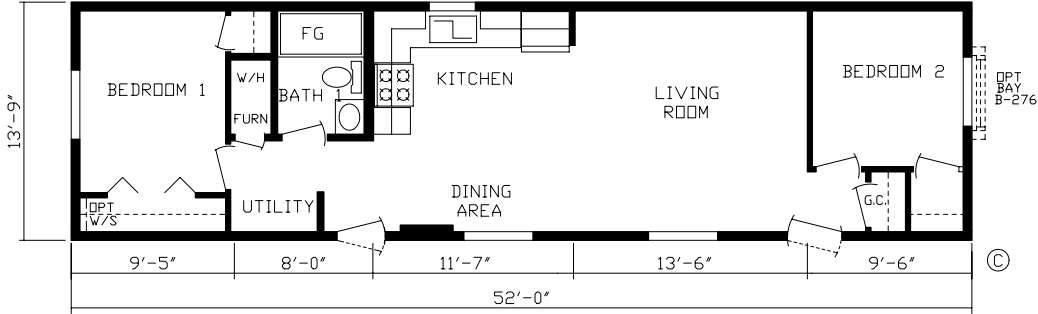
Yukon

Single Section Homes
CANADIAN A277



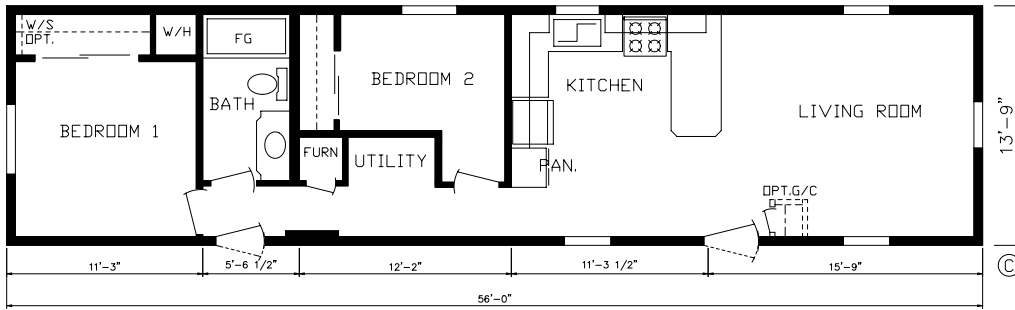
143009

Order No. 143009 • Model No. 5014 • Sq. Ft. 633



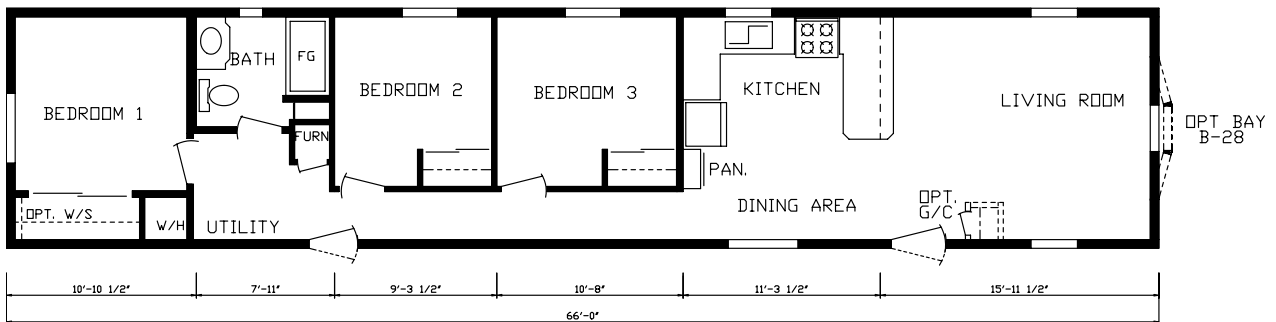
143010

Order No. 143010 • Model No. 5614 • Sq. Ft. 715



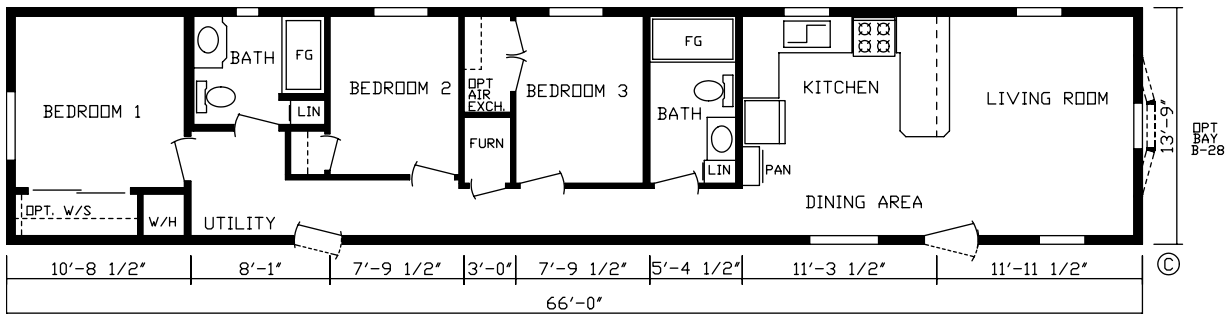
143002

Order No. 143002 • Model No. 6014 • Sq. Ft. 770



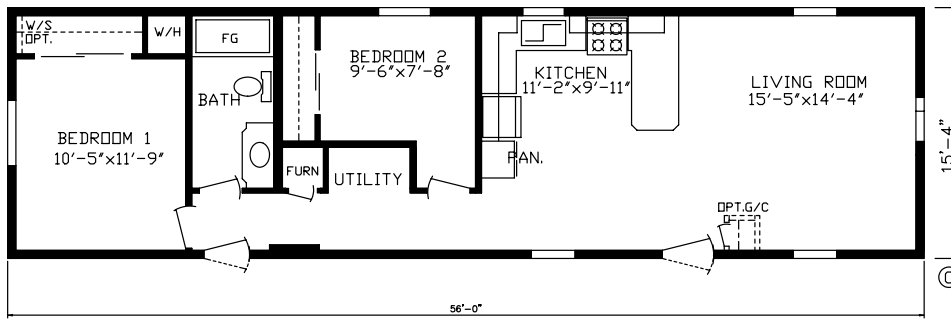
143000

Order No. 143000 • Model No. 7014 • Sq. Ft. 908



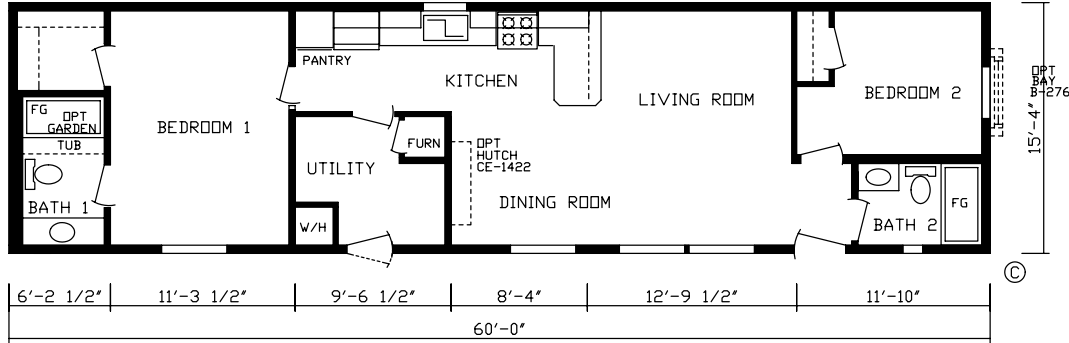
143015

Order No. 143015 • Model No. 7014 • Sq. Ft. 908



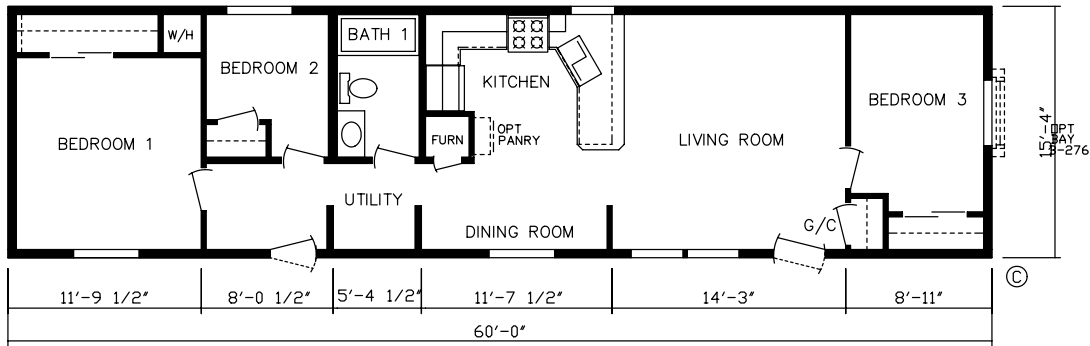
143030

Order No. 143030 • Model No. 6016 • Sq. Ft. 858



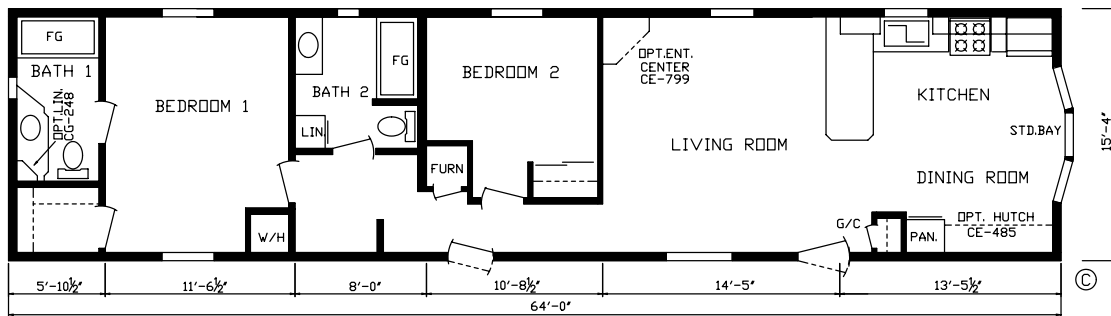
143018

Order No. 143018 • Model No. 6416 • Sq. Ft. 904



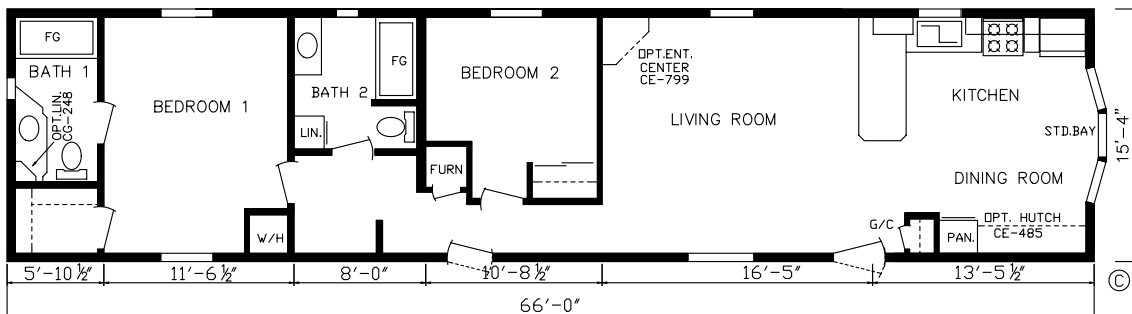
143024

Order No. 143024 • Model No. 6416 • Sq. Ft. 904



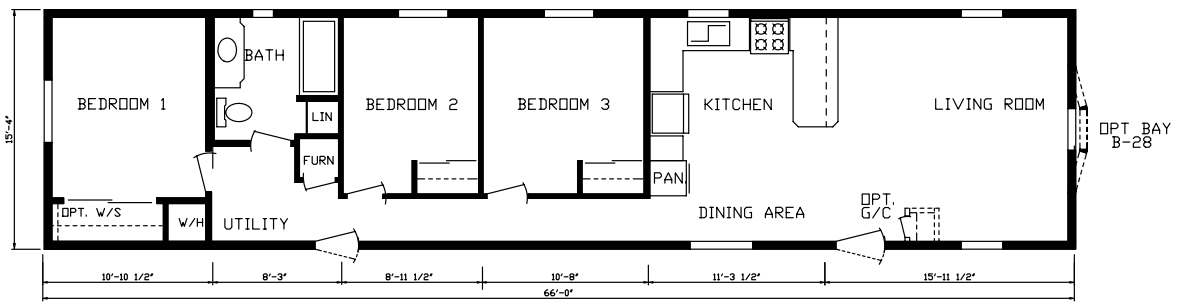
143023

Order No. 143023 • Model No. 6816 • Sq. Ft. 981



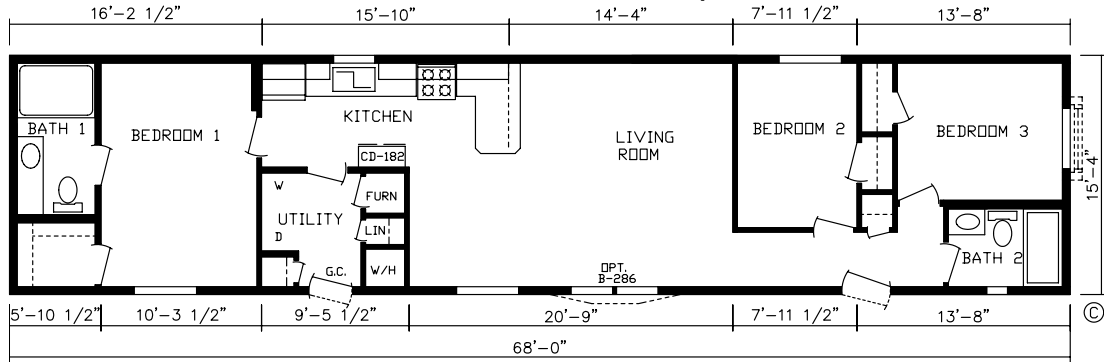
143003

Order No. 143003 • Model No. 7016 • Sq. Ft. 1012



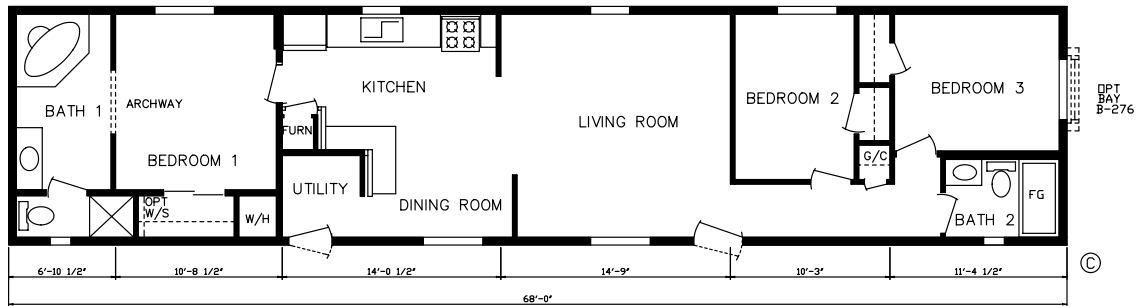
143025

Order No. 143025 • Model No. 7016 • Sq. Ft. 1012



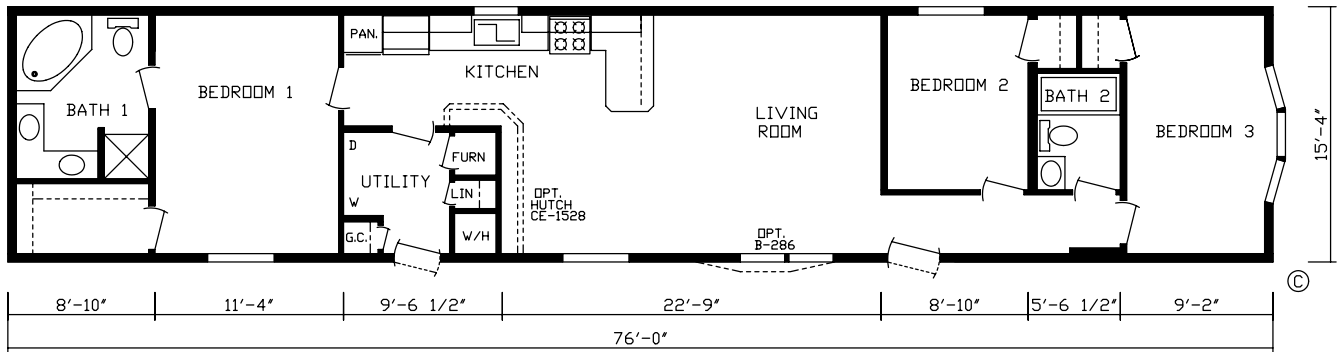
143028

Order No. 143028 • Model No. 7216 • Sq. Ft. 1042



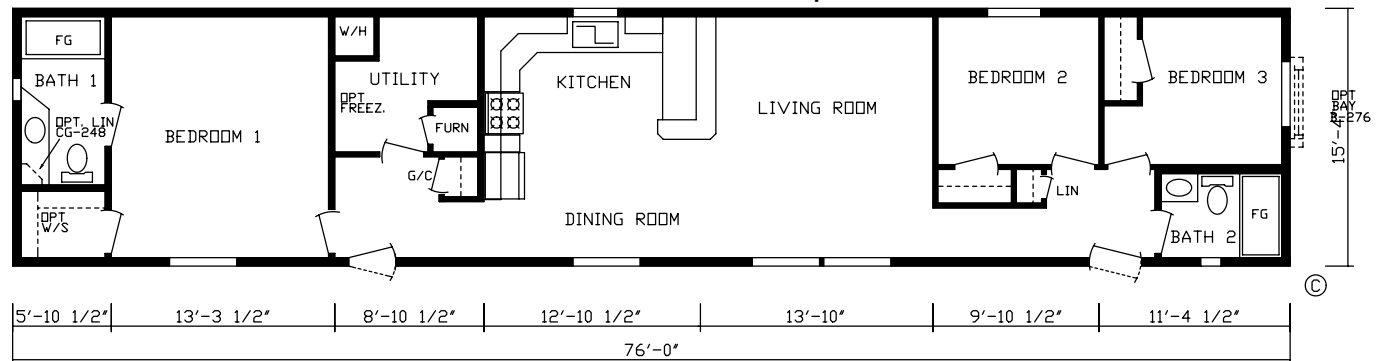
143007

Order No. 143007 • Model No. 7216 • Sq. Ft. 1042



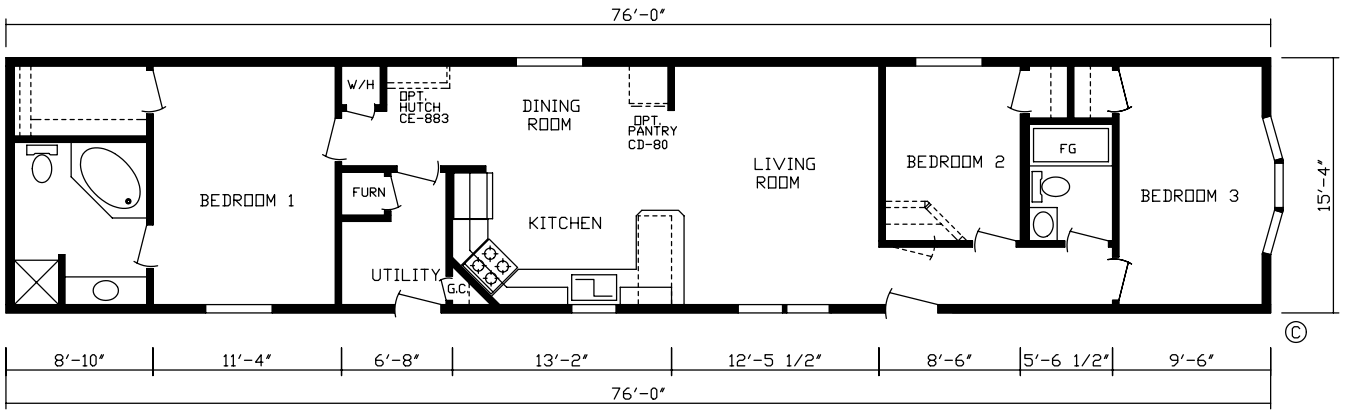
143014

Order No. 143014 • Model No. 8016 • Sq. Ft. 1165



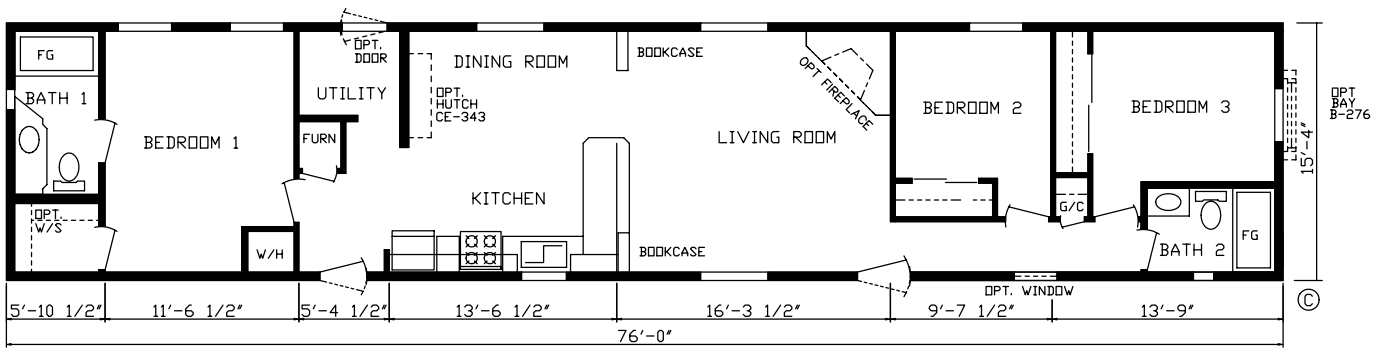
143016

Order No. 143016 • Model No. 8016 • Sq. Ft. 1165



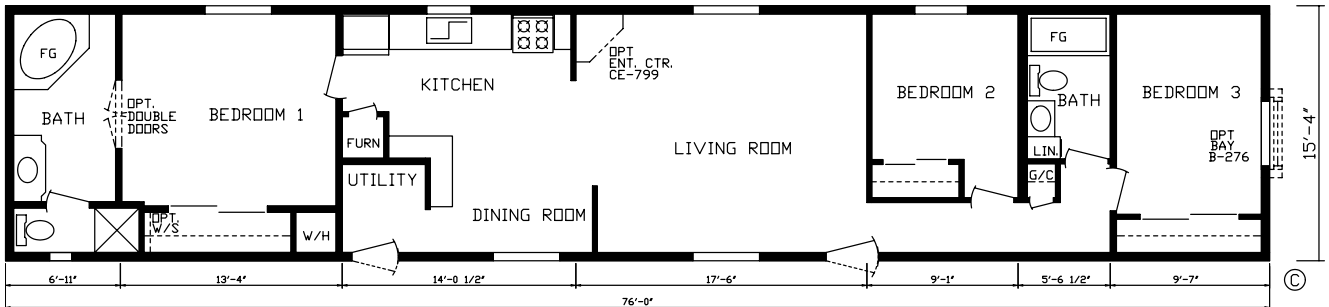
143017

Order No. 143017 • Model No. 8016 • Sq. Ft. 1165



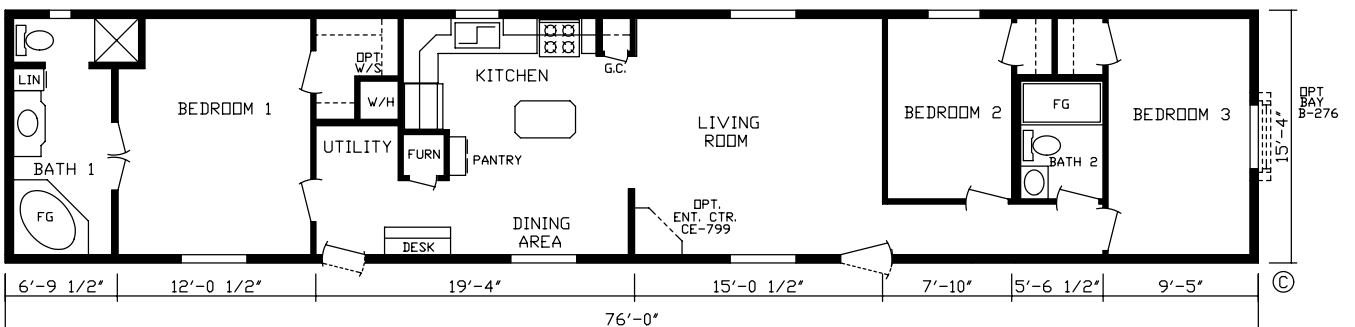
143001

Order No. 143001 • Model No. 8016 • Sq. Ft. 1165



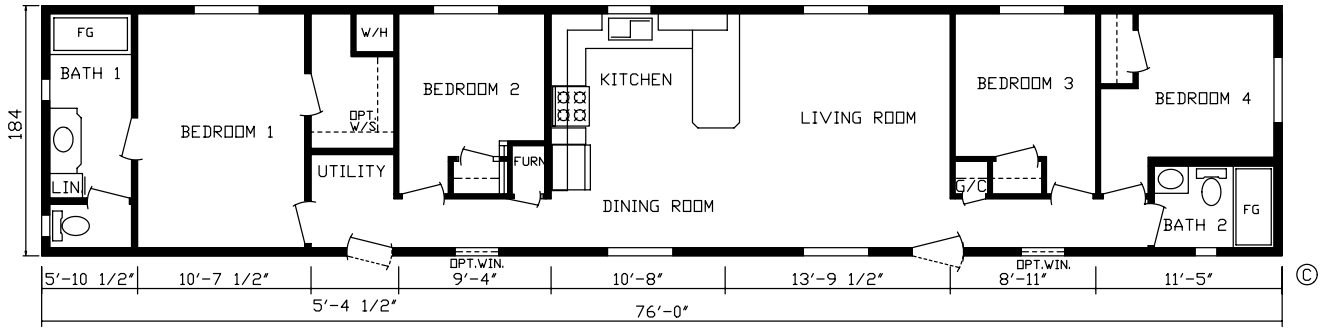
143004

Order No. 143004 • Model No. 8016 • Sq. Ft. 1165



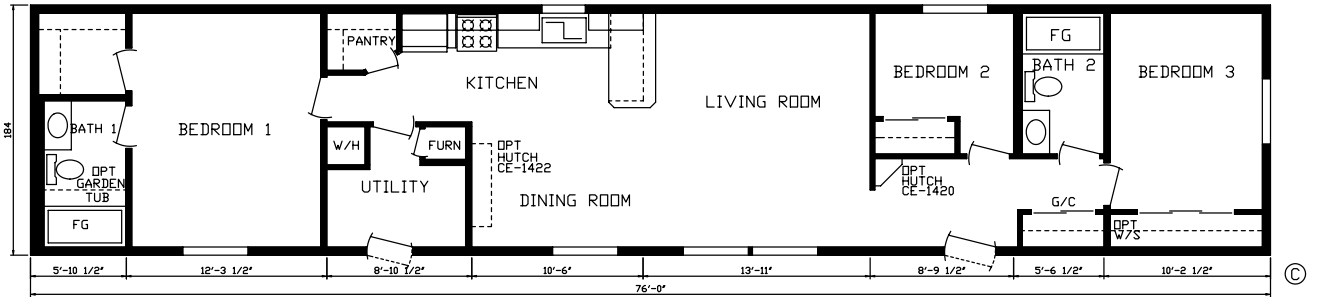
143005

Order No. 143005 • Model No. 8016 • Sq. Ft. 1165



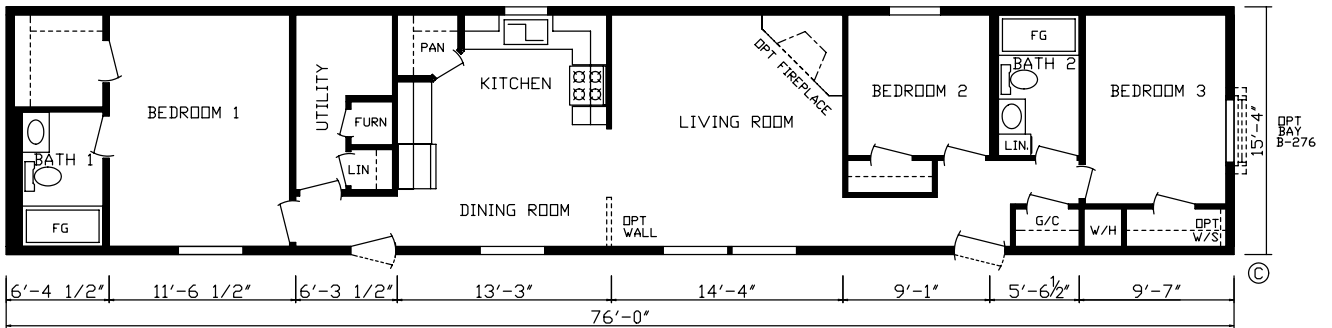
143006

Order No. 143006 • Model No. 8016 • Sq. Ft. 1165



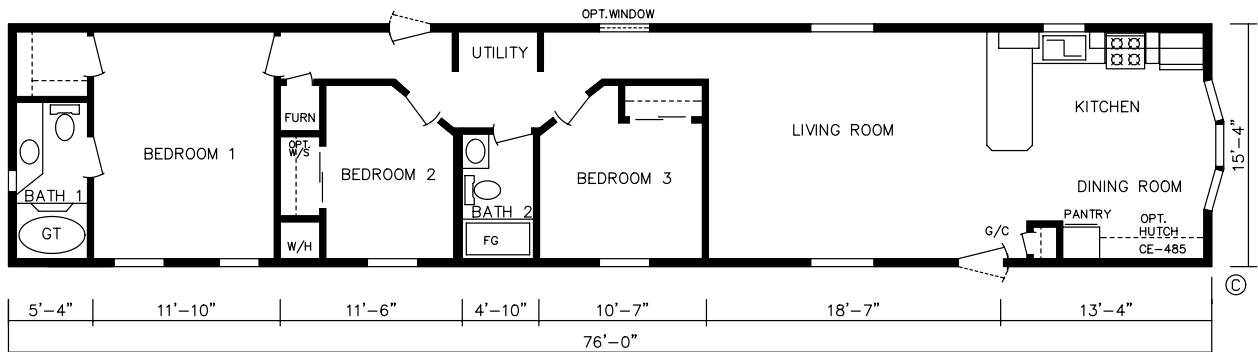
143008

Order No. 143008 • Model No. 8016 • Sq. Ft. 1165



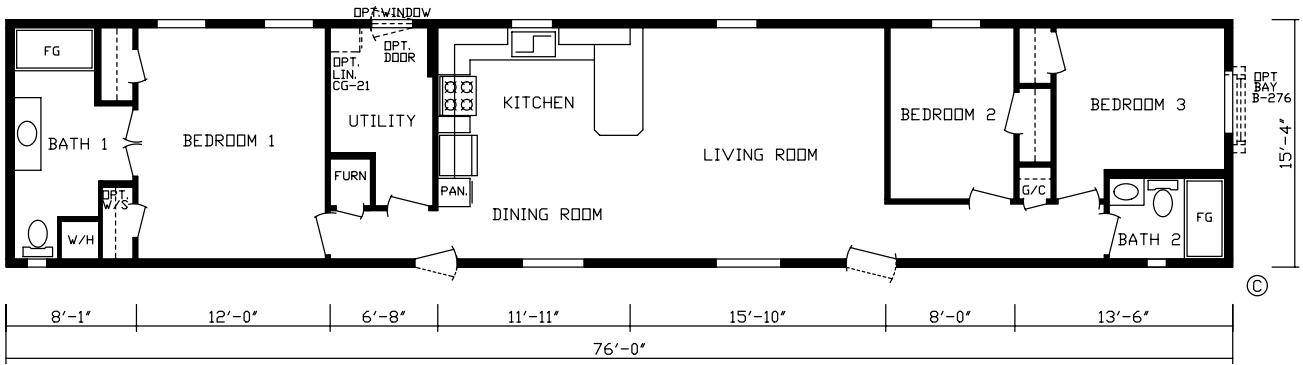
143011

Order No. 143011 • Model No. 8016 • Sq. Ft. 1165



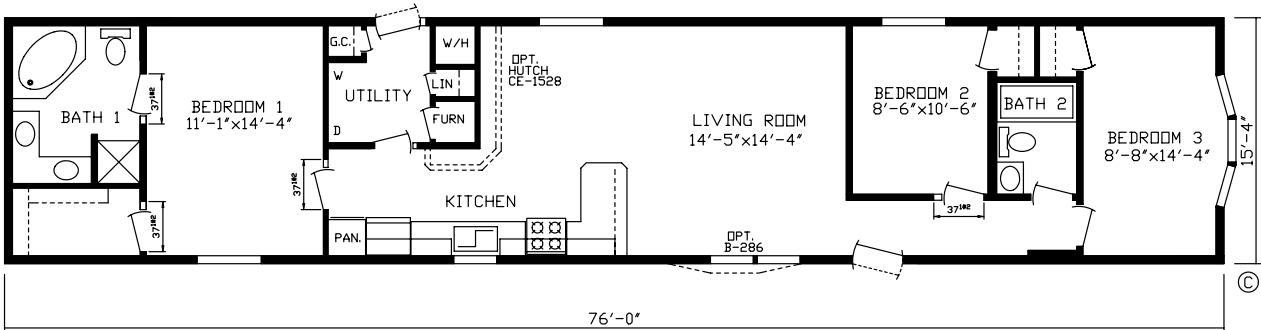
143012

Order No. 143012 • Model No. 8016 • Sq. Ft. 1165



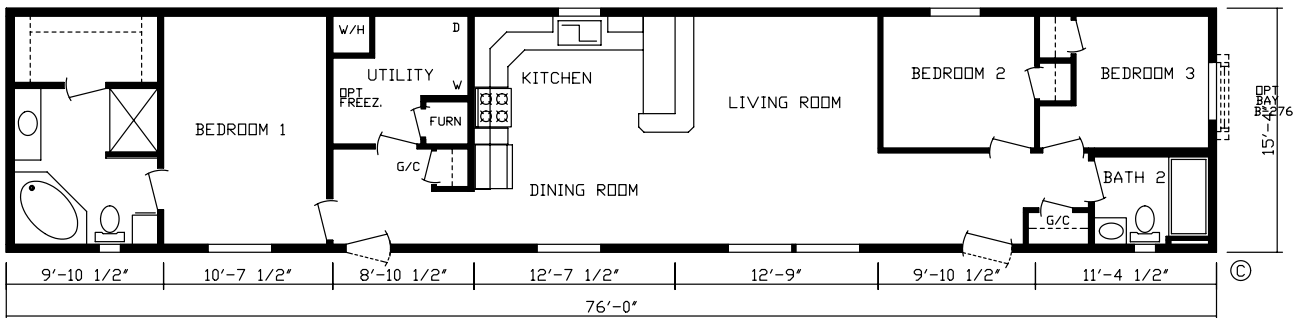
143013

Order No. 143013 • Model No. 8016 • Sq. Ft. 1165



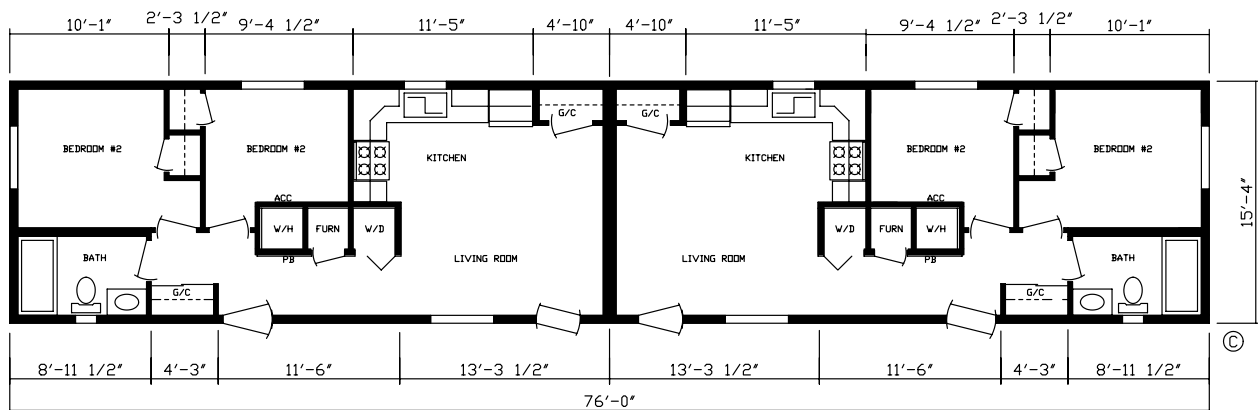
143029

Order No. 143029 • Model No. 8016 • Sq. Ft. 1165



143021

Order No. 143021 • Model No. 8016 • Sq. Ft. 1165



143027

Order No. 143027 • Model No. 8016 • Sq. Ft. 1165

Yukon

Single Section Homes

Standard Specifications

GENERAL

12" I-BEAM FRAME W/4' O.C. OUTRIGGERS
2 x 10 #2 FLOOR JOISTS
3/4" FLOOR DECKING
8' SIDEWALL HEIGHT
CATHEDRAL CEILINGS
2x4 INTERIOR WALLS
ENERGY TRUSS RAFTERS- 24" O.C.
60 LB ROOF LOAD
4/12 ROOF PITCH STANDARD
6 MIL VAPOR BARRIER AT ALL EXT. WALLS,
AND CEILING
PINTEL HITCH

FLOOR COVERING

VINYL FLOOR FOYER
LEGACY CONGOLEUM NO-WAX VINYL FLOOR
COVERINGS
PLUSH 25 OZ. NEW DAY CARPET
TACK STRIP THRU-OUT
7 LB CARPET PAD THRU-OUT

HEATING

EVCON ELECTRIC FURNACE
(HIGH EFFICIENCY GAS FURNACE OPTIONAL)
POSITIVE OPERATING SYSTEM
INSULATED HEAT DUCT
PERIMETER HEAT

ELECTRICAL

GFI PROTECTED RECEPITS IN BATHS &
KITCHEN
(2) EXTERIOR RECEPITS
CEILING LIGHTS IN ALL BEDROOMS
WIRE & VENT FOR DRYER
200 AMP BREAKER BOX
(100 AMP OPTIONAL)
GLASS GLOBES & SHADES
LIGHT OVER KITCHEN SINK
ROCKER STYLE LIGHT SWITCHES
CEILING LIGHT W/ SWITCH IN WALK-IN
CLOSETS
3-WAY SWITCH IN UTIL. ROOM (MOST
MODELS)
ARC FAULT PROTECTION IN BEDROOMS
BRACE FOR FAN IN ALL BEDROOMS
SMOKE ALARMS W/CO DETECTOR
UPGRADE COACH LIGHT AT FRONT DOOR
UPGRADE COACH LIGHT AT REAR DOOR
SYDNEY NICKEL DNG RM CHANDELIER
PANEL BOX COVER
PRINCIPAL VENTILATION SYSTEM

PLUMBING

40 GAL.ELECTRIC WATER HEATER
PLUMB FOR WASHER
MOEN FAUCETS THRU-OUT
CHROME SINGLE LEVER FAUCET
IN KIT WITH SPRAYER
ANTI-SCALD TUB/SHOWER FAUCETS
WHITE ACRYLIC KITCHEN SINK
(STAINLESS STEEL OPTIONAL)
SOLID CORE DRAIN LINES
PEX WATER LINE SYSTEM
WATER SHUT OFF VALVES T/O(EXCEPT TUBS)
WATER INLET SHUT OFF VALVE
(1) FROST FREE EXTERIOR FAUCET DOOR
SIDE

BATHS

EXHAUST FAN W/ LIGHT #1 BATH
PORCELAIN BATH LAVS W/ POP-UP &
OVERFLOW
OVERFLOW TUB DRAINS
CHROME TOWEL BAR & PAPER HOLDERS
BATHS
FIBERGLASS TUBS – BOTH BATHS
DELUXE MIRROR -EA BATH
DRAWER BANK IN MOST MASTER BATH LAVS

INSULATION

2X6 SIDEWALLS-16" O.C. W/ R-24
R-44 BLOWN CEILING INSULATION
R-28 INSULATION IN FLOOR

CABINETRY

RIDGEMONT OAK STAINED HARDWOOD
CABINET DOORS
DOVETAIL CONSTRUCTION WOOD DRAWERS
STEEL ROLLER GUIDE DRAWER SYSTEM
HARDWOOD STILES W/CONCEALED HINGES
DRAWERS ABOVE BASE CABINETS IN KITCHEN
30" OVERHEAD CABINETS
SHELF IN WASHER/DRYER AREA
GUEST CLOSET
CENTER SHELF IN KIT BASE CABINETS
CROWN MOLDING ON O'HEAD CAB.
BRUSHED NICKEL CABINET HARDWARE
LAMINATED BACKSPLASH -KIT & BATHS
LAMINATED BEVELED EDGE COUNTERTOP
BIRCH LINED INTERIOR CABINETS
CERAMIC INSERT IN KITCHEN (PER PLAN)

EXTERIOR

ENERGY SEAL WINDBREAKER
7/16" WOOD SHEATHING SIDEWALLS
& ENDWALLS
RIDGE & EAVE VENTING
15" RESIDENTIAL SHUTTERS-FRONT
& DOOR SIDE
VINYL LAP SIDING (DOUBLE 4)
3" EAVES (12" FIXED OPTION)
ARCHITECTURAL SHINGLES

DOORS

38X82 DECORATOR FRONT DOOR W/
STORM
34X82 9-LITE REAR DOOR W/STORM
BRUSHED NICKEL LEVER INTERIOR
DOOR HANDLES
DEADBOLT LOCK FRONT & REAR DOOR
32X82 INTERIOR DOORS
TRIPLE MORTISE HINGES ON INTERIOR
DOORS
HARDWOOD DOOR JAMBS

DÉCOR

1" MINI BLINDS THRU-OUT
LUXE DRAPE PACKAGE
VINYL ON GYPSUM WALLS W/ LAUAN
SUBSTRATE
HARDWOOD TRIM THROUGHOUT BASE,
CASE, & CROWN
BASE IN WET AREAS ONLY w/ VOG
CROWN. OPTIONAL w/ DRYWALL

WINDOWS

THERMOPANE "LOW E" VINYL WINDOWS
HARDWOOD SILLS

APPLIANCES

WHITE 30" DELUXE ELECTRIC RANGE
WHITE 18 C.F. 2 DOOR FROST FREE
REFER
WHITE POWERSCRUB DISHWASHER
WHITE POWER VENT RANGE HOOD
WITH LIGHT

